

## Product datasheet for **TA813254**

### CTLA4 Mouse Monoclonal Antibody [Clone ID: OTI8B5]

#### Product data:

Product Type:	Primary Antibodies
Clone Name:	OTI8B5
Applications:	FC
Recommended Dilution:	FLOW 1:400
Reactivity:	Human
Host:	Mouse
Isotype:	IgG1
Clonality:	Monoclonal
Immunogen:	Full length human recombinant protein of human CTLA4 (NP_005205) produced in HEK293T cell.
Formulation:	PBS (pH 7.3) containing 1% BSA, 50% glycerol and 0.02% sodium azide.
Concentration:	1 mg/ml
Purification:	Purified from mouse ascites fluids or tissue culture supernatant by affinity chromatography (protein A/G)
Conjugation:	Unconjugated
Storage:	Store at -20°C as received.
Stability:	Stable for 12 months from date of receipt.
Predicted Protein Size:	24.66 kDa
Gene Name:	cytotoxic T-lymphocyte associated protein 4
Database Link:	<a href="#">NP_005205</a> <a href="#">Entrez Gene 1493 Human</a> <a href="#">P16410</a>



[View online »](#)

**Background:**

This gene is a member of the immunoglobulin superfamily and encodes a protein which transmits an inhibitory signal to T cells. The protein contains a V domain, a transmembrane domain, and a cytoplasmic tail. Alternate transcriptional splice variants, encoding different isoforms, have been characterized. The membrane-bound isoform functions as a homodimer interconnected by a disulfide bond, while the soluble isoform functions as a monomer. Mutations in this gene have been associated with insulin-dependent diabetes mellitus, Graves disease, Hashimoto thyroiditis, celiac disease, systemic lupus erythematosus, thyroid-associated orbitopathy, and other autoimmune diseases. [provided by RefSeq, Jul 2008]

**Synonyms:**

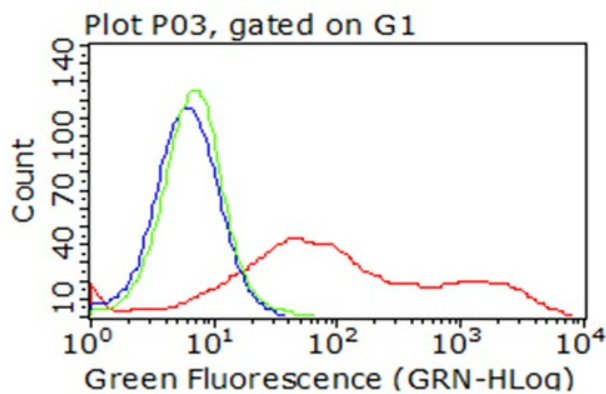
ALPS5; CD; CD152; CELIAC3; CTLA-4; GRD4; GSE; IDDM12

**Protein Families:**

Druggable Genome, Transmembrane

**Protein Pathways:**

Autoimmune thyroid disease, Cell adhesion molecules (CAMs), T cell receptor signaling pathway

**Product images:**

Flow cytometric analysis of living 293T cells transfected with CTLA4 overexpression plasmid ([RC210150]), Red/empty vector ([PS100001], Blue) using anti-CTLA4 antibody (TA813254). Cells incubated with a non-specific antibody (Green) were used as isotype control (1:400).