

Product datasheet for **TA813249**

CTLA4 Mouse Monoclonal Antibody [Clone ID: OTI10C8]

Product data:

| | |
|-------------------------|---|
| Product Type: | Primary Antibodies |
| Clone Name: | OTI10C8 |
| Applications: | FC |
| Recommended Dilution: | FLOW 1:400 |
| Reactivity: | Human |
| Host: | Mouse |
| Isotype: | IgG1 |
| Clonality: | Monoclonal |
| Immunogen: | Full length human recombinant protein of human CTLA4 (NP_005205) produced in HEK293T cell. |
| Formulation: | PBS (pH 7.3) containing 1% BSA, 50% glycerol and 0.02% sodium azide. |
| Concentration: | 1 mg/ml |
| Purification: | Purified from mouse ascites fluids or tissue culture supernatant by affinity chromatography (protein A/G) |
| Conjugation: | Unconjugated |
| Storage: | Store at -20°C as received. |
| Stability: | Stable for 12 months from date of receipt. |
| Predicted Protein Size: | 24.66 kDa |
| Gene Name: | cytotoxic T-lymphocyte associated protein 4 |
| Database Link: | NP_005205 Entrez Gene 1493 Human P16410 |



[View online »](#)

Background:

This gene is a member of the immunoglobulin superfamily and encodes a protein which transmits an inhibitory signal to T cells. The protein contains a V domain, a transmembrane domain, and a cytoplasmic tail. Alternate transcriptional splice variants, encoding different isoforms, have been characterized. The membrane-bound isoform functions as a homodimer interconnected by a disulfide bond, while the soluble isoform functions as a monomer. Mutations in this gene have been associated with insulin-dependent diabetes mellitus, Graves disease, Hashimoto thyroiditis, celiac disease, systemic lupus erythematosus, thyroid-associated orbitopathy, and other autoimmune diseases. [provided by RefSeq, Jul 2008]

Synonyms:

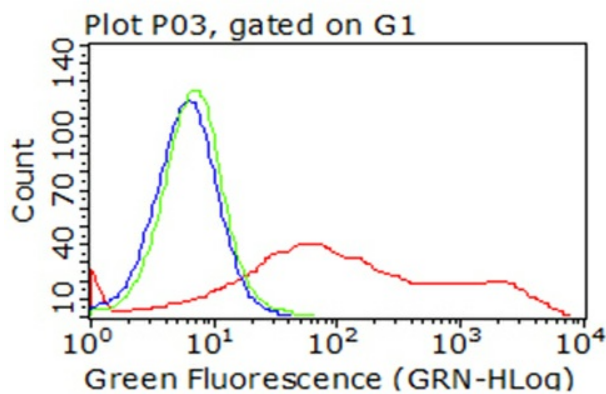
ALPS5; CD; CD152; CELIAC3; CTLA-4; GRD4; GSE; IDDM12

Protein Families:

Druggable Genome, Transmembrane

Protein Pathways:

Autoimmune thyroid disease, Cell adhesion molecules (CAMs), T cell receptor signaling pathway

Product images:

Flow cytometric analysis of living 293T cells transfected with CTLA4 overexpression plasmid ([RC210150]), Red/empty vector ([PS100001], Blue) using anti-CTLA4 antibody (TA813249). Cells incubated with a non-specific antibody (Green) were used as isotype control (1:400).