

## Product datasheet for **TA813244**

### CTLA4 Mouse Monoclonal Antibody [Clone ID: OTI1A11]

#### Product data:

|                         |   |
|-------------------------|---|
| Product Type:           | Primary Antibodies  |
| Clone Name:             | OTI1A11   |
| Applications:           | FC  |
| Recommended Dilution:   | FLOW 1:400  |
| Reactivity:             | Human   |
| Host:                   | Mouse   |
| Isotype:                | IgG1  |
| Clonality:              | Monoclonal  |
| Immunogen:              | Full length human recombinant protein of human CTLA4 (NP_005205) produced in HEK293T cell.                |
| Formulation:            | PBS (pH 7.3) containing 1% BSA, 50% glycerol and 0.02% sodium azide.                                      |
| Concentration:          | 1 mg/ml   |
| Purification:           | Purified from mouse ascites fluids or tissue culture supernatant by affinity chromatography (protein A/G) |
| Conjugation:            | Unconjugated  |
| Storage:                | Store at -20°C as received.   |
| Stability:              | Stable for 12 months from date of receipt.  |
| Predicted Protein Size: | 24.66 kDa   |
| Gene Name:              | cytotoxic T-lymphocyte associated protein 4   |
| Database Link:          | <a href="#">NP_005205</a><br><a href="#">Entrez Gene 1493 Human</a><br><a href="#">P16410</a>             |



[View online »](#)

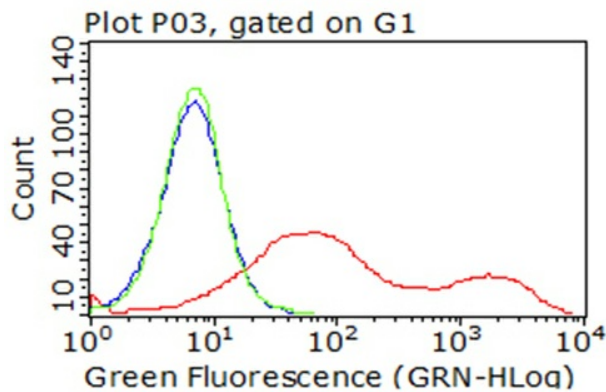
**Background:** This gene is a member of the immunoglobulin superfamily and encodes a protein which transmits an inhibitory signal to T cells. The protein contains a V domain, a transmembrane domain, and a cytoplasmic tail. Alternate transcriptional splice variants, encoding different isoforms, have been characterized. The membrane-bound isoform functions as a homodimer interconnected by a disulfide bond, while the soluble isoform functions as a monomer. Mutations in this gene have been associated with insulin-dependent diabetes mellitus, Graves disease, Hashimoto thyroiditis, celiac disease, systemic lupus erythematosus, thyroid-associated orbitopathy, and other autoimmune diseases. [provided by RefSeq, Jul 2008]

**Synonyms:** ALPS5; CD; CD152; CELIAC3; CTLA-4; GRD4; GSE; IDDM12

**Protein Families:** Druggable Genome, Transmembrane

**Protein Pathways:** Autoimmune thyroid disease, Cell adhesion molecules (CAMs), T cell receptor signaling pathway

### Product images:



Flow cytometric analysis of living 293T cells transfected with CTLA4 overexpression plasmid ([RC210150]), Red/empty vector ([PS100001], Blue) using anti-CTLA4 antibody (TA813244). Cells incubated with a non-specific antibody (Green) were used as isotype control (1:400).