

## Product datasheet for **TA813141BM**

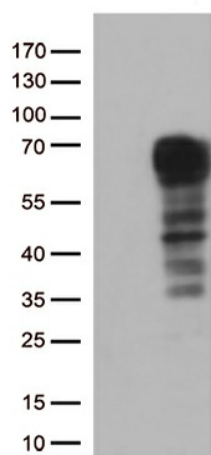
### **DOK3 Mouse Monoclonal Antibody (HRP conjugated) [Clone ID: OTI4F3]**

#### **Product data:**

Product Type:	Primary Antibodies
Clone Name:	OTI4F3
Applications:	WB
Recommended Dilution:	WB 1:500
Reactivity:	Human
Host:	Mouse
Isotype:	IgG1
Clonality:	Monoclonal
Immunogen:	Human recombinant protein fragment corresponding to amino acids 63-317 of human DOK3 (NP_079148) produced in E.coli.
Formulation:	PBS (pH 7.3) containing 1% BSA, 50% glycerol.
Concentration:	0.5 mg/ml
Purification:	Purified from mouse ascites fluids or tissue culture supernatant by affinity chromatography (protein A/G)
Conjugation:	HRP
Storage:	Store at -20°C as received.
Stability:	Stable for 12 months from date of receipt.
Predicted Protein Size:	53.1 kDa
Gene Name:	docking protein 3
Database Link:	<a href="#">NP_079148</a> <a href="#">Entrez Gene 79930 Human</a> <a href="#">Q7L591</a>
Synonyms:	DOKL
Protein Families:	Druggable Genome



[View online »](#)

**Product images:**

HEK293T cells were transfected with the pCMV6-ENTRY control (Left lane) or pCMV6-ENTRY DOK3 ([RC222370], Right lane) cDNA for 48 hrs and lysed. Equivalent amounts of cell lysates (5 ug per lane) were separated by SDS-PAGE and immunoblotted with anti-DOK3 (1:500).