

## Product datasheet for **TA813128**

### MEPCE Mouse Monoclonal Antibody [Clone ID: OTI2E7]

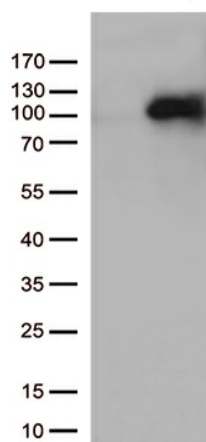
#### Product data:

Product Type:	Primary Antibodies
Clone Name:	OTI2E7
Applications:	WB
Recommended Dilution:	WB 1:250~500
Reactivity:	Human, Mouse
Host:	Mouse
Isotype:	IgG2a
Clonality:	Monoclonal
Immunogen:	Human recombinant protein fragment corresponding to amino acids 1-289 of human MEPCE (NP_062552) produced in E.coli.
Formulation:	PBS (pH 7.3) containing 1% BSA, 50% glycerol and 0.02% sodium azide.
Concentration:	1 mg/ml
Purification:	Purified from mouse ascites fluids or tissue culture supernatant by affinity chromatography (protein A/G)
Conjugation:	Unconjugated
Storage:	Store at -20°C as received.
Stability:	Stable for 12 months from date of receipt.
Predicted Protein Size:	74.2 kDa
Gene Name:	methylphosphate capping enzyme
Database Link:	<a href="#">NP_062552</a> <a href="#">Entrez Gene 231803 Mouse</a> <a href="#">Entrez Gene 56257 Human</a> <a href="#">Q7L2I0</a>
Synonyms:	BCDIN3
Protein Families:	Druggable Genome

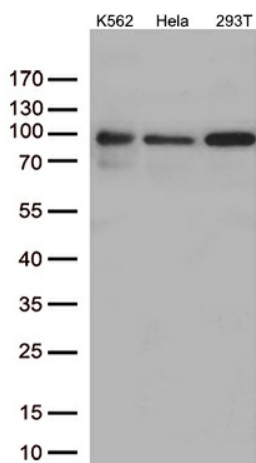


[View online »](#)

## Product images:



HEK293T cells were transfected with the pCMV6-ENTRY control (Cat# [PS100001], Left lane) or pCMV6-ENTRY MEPCE (Cat# [RC200948], Right lane) cDNA for 48 hrs and lysed. Equivalent amounts of cell lysates (5 ug per lane) were separated by SDS-PAGE and immunoblotted with anti-MEPCE (Cat# TA813128)(1:500).



Western blot analysis of extracts (35ug) from 3 cell lines lysates by using anti-MEPCE monoclonal antibody (1:250).