

## Product datasheet for **TA813126BM**

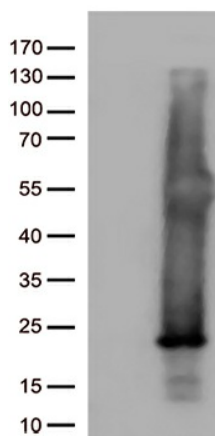
### ASF1B Mouse Monoclonal Antibody (HRP conjugated) [Clone ID: OTI1H5]

#### Product data:

Product Type:	Primary Antibodies
Clone Name:	OTI1H5
Applications:	WB
Recommended Dilution:	WB 1:500
Reactivity:	Human, Mouse, Rat
Host:	Mouse
Isotype:	IgG2b
Clonality:	Monoclonal
Immunogen:	Full length human recombinant protein of human ASF1B (NP_060624) produced in E.coli.
Formulation:	PBS (pH 7.3) containing 1% BSA, 50% glycerol.
Concentration:	0.5 mg/ml
Purification:	Purified from mouse ascites fluids or tissue culture supernatant by affinity chromatography (protein A/G)
Conjugation:	HRP
Storage:	Store at -20°C as received.
Stability:	Stable for 12 months from date of receipt.
Predicted Protein Size:	22.3 kDa
Gene Name:	anti-silencing function 1B histone chaperone
Database Link:	<a href="#">NP_060624</a> <a href="#">Entrez Gene 66929 Mouse</a> <a href="#">Entrez Gene 304648 Rat</a> <a href="#">Entrez Gene 55723 Human</a> <a href="#">Q9NVP2</a>
Background:	This gene encodes a member of the H3/H4 family of histone chaperone proteins and is similar to the anti-silencing function-1 gene in yeast. The encoded protein is the substrate of the tousel-like kinase family of cell cycle-regulated kinases, and may play a key role in modulating the nucleosome structure of chromatin by ensuring a constant supply of histones at sites of nucleosome assembly. [provided by RefSeq, Jul 2008]
Synonyms:	CIA-II



[View online »](#)

**Product images:**

HEK293T cells were transfected with the pCMV6-ENTRY control (Left lane) or pCMV6-ENTRY ASF1B ([RC206114], Right lane) cDNA for 48 hrs and lysed. Equivalent amounts of cell lysates (5 ug per lane) were separated by SDS-PAGE and immunoblotted with anti-ASF1B (1:500).