

Product datasheet for **TA813125AM**

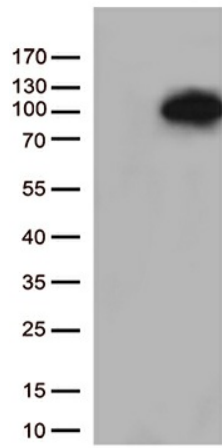
MEPCE Mouse Monoclonal Antibody (Biotin conjugated) [Clone ID: OT11H10]

Product data:

Product Type:	Primary Antibodies
Clone Name:	OT11H10
Applications:	WB
Recommended Dilution:	WB 1:500
Reactivity:	Human, Mouse
Host:	Mouse
Isotype:	IgG2b
Clonality:	Monoclonal
Immunogen:	Human recombinant protein fragment corresponding to amino acids 1-289 of human MEPCE (NP_062552) produced in E.coli.
Formulation:	PBS (pH 7.3) containing 1% BSA, 50% glycerol and 0.02% sodium azide.
Concentration:	0.5 mg/ml
Purification:	Purified from mouse ascites fluids or tissue culture supernatant by affinity chromatography (protein A/G)
Conjugation:	Biotin
Storage:	Store at -20°C as received.
Stability:	Stable for 12 months from date of receipt.
Predicted Protein Size:	74.2 kDa
Gene Name:	methylphosphate capping enzyme
Database Link:	NP_062552 Entrez Gene 231803 Mouse Entrez Gene 56257 Human Q7L2J0
Synonyms:	BCDIN3
Protein Families:	Druggable Genome



[View online »](#)

Product images:

HEK293T cells were transfected with the pCMV6-ENTRY control (Left lane) or pCMV6-ENTRY MEPCE [RC200948], Right lane) cDNA for 48 hrs and lysed. Equivalent amounts of cell lysates (5 ug per lane) were separated by SDS-PAGE and immunoblotted with anti-MEPCE (1:500).