

## Product datasheet for **TA813121M**

### AMPK beta 1 (PRKAB1) Mouse Monoclonal Antibody [Clone ID: OTI8D5]

#### Product data:

Product Type:	Primary Antibodies
Clone Name:	OTI8D5
Applications:	WB
Recommended Dilution:	WB 1:500
Reactivity:	Human, Rat, Monkey, Mouse
Host:	Mouse
Isotype:	IgG1
Clonality:	Monoclonal
Immunogen:	Human recombinant protein fragment corresponding to amino acids 2-270 of human PRKAB1 (NP_006244) produced in E.coli.
Formulation:	PBS (pH 7.3) containing 1% BSA, 50% glycerol and 0.02% sodium azide.
Concentration:	1 mg/ml
Purification:	Purified from mouse ascites fluids or tissue culture supernatant by affinity chromatography (protein A/G)
Conjugation:	Unconjugated
Storage:	Store at -20°C as received.
Stability:	Stable for 12 months from date of receipt.
Predicted Protein Size:	30.2 kDa
Gene Name:	protein kinase AMP-activated non-catalytic subunit beta 1
Database Link:	<a href="#">NP_006244</a> <a href="#">Entrez Gene 19079 Mouse</a> <a href="#">Entrez Gene 83803 Rat</a> <a href="#">Entrez Gene 695737 Monkey</a> <a href="#">Entrez Gene 5564 Human</a> <a href="#">Q9Y478</a>



[View online »](#)

**Background:**

Non-catalytic subunit of AMP-activated protein kinase (AMPK), an energy sensor protein kinase that plays a key role in regulating cellular energy metabolism. In response to reduction of intracellular ATP levels, AMPK activates energy-producing pathways and inhibits energy-consuming processes: inhibits protein, carbohydrate and lipid biosynthesis, as well as cell growth and proliferation. AMPK acts via direct phosphorylation of metabolic enzymes, and by longer-term effects via phosphorylation of transcription regulators. Also acts as a regulator of cellular polarity by remodeling the actin cytoskeleton; probably by indirectly activating myosin. Beta non-catalytic subunit acts as a scaffold on which the AMPK complex assembles, via its C-terminus that bridges alpha (PRKAA1 or PRKAA2) and gamma subunits (PRKAG1, PRKAG2 or PRKAG3). [UniProtKB/Swiss-Prot Function]

**Synonyms:**

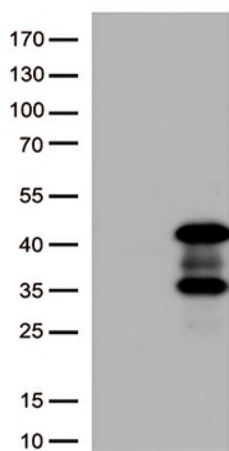
AMPK; HAMPKb

**Protein Families:**

Druggable Genome

**Protein Pathways:**

Adipocytokine signaling pathway, Hypertrophic cardiomyopathy (HCM), Insulin signaling pathway

**Product images:**


HEK293T cells were transfected with the pCMV6-ENTRY control (Cat# [PS100001], Left lane) or pCMV6-ENTRY PRKAB1 (Cat# [RC203911], Right lane) cDNA for 48 hrs and lysed. Equivalent amounts of cell lysates (5 ug per lane) were separated by SDS-PAGE and immunoblotted with anti-PRKAB1 (Cat# [TA813121])(1:500).



Western blot analysis of extracts (35ug) from 10 cell lines lysates by using anti-PRKAB1 monoclonal antibody (1:500).