

Product datasheet for **TA813096M**

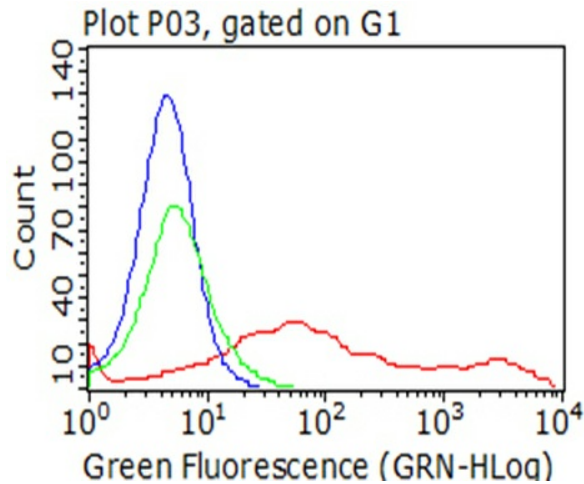
CD137 (TNFRSF9) Mouse Monoclonal Antibody [Clone ID: OTI14C10]

Product data:

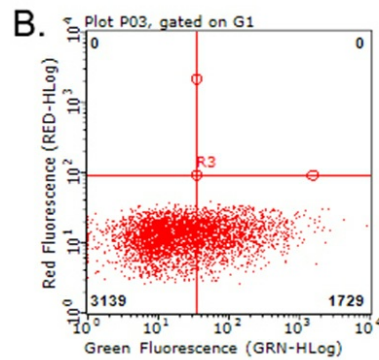
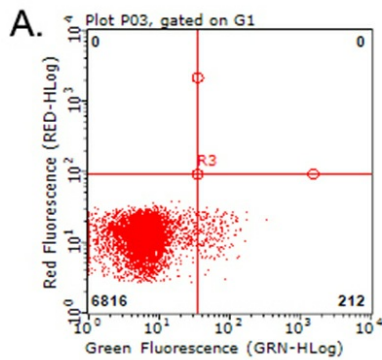
| | |
|-----------------------|---|
| Product Type: | Primary Antibodies |
| Clone Name: | OTI14C10 |
| Applications: | FC |
| Recommended Dilution: | FLOW 1:100 |
| Reactivity: | Human |
| Host: | Mouse |
| Isotype: | IgG1 |
| Clonality: | Monoclonal |
| Immunogen: | Full length human recombinant protein of human TNFRSF9 (NP_001552) produced in HEK293T cell. |
| Formulation: | PBS (pH 7.3) containing 1% BSA, 50% glycerol and 0.02% sodium azide. |
| Concentration: | 1 mg/ml |
| Purification: | Purified from mouse ascites fluids or tissue culture supernatant by affinity chromatography (protein A/G) |
| Conjugation: | Unconjugated |
| Storage: | Store at -20°C as received. |
| Stability: | Stable for 12 months from date of receipt. |
| Gene Name: | tumor necrosis factor receptor superfamily member 9 |
| Database Link: | NP_001552 Entrez Gene 3604 Human Q07011 |
| Background: | Receptor for TNFSF9/4-1BBL. Possibly active during T cell activation. [UniProtKB/Swiss-Prot Function] |
| Synonyms: | 4-1BB; CD137; CDw137; ILA |
| Protein Families: | Druggable Genome, Transmembrane |
| Protein Pathways: | Cytokine-cytokine receptor interaction |

[View online »](#)

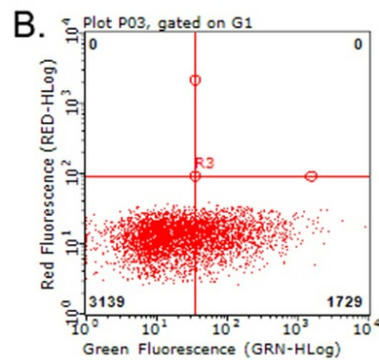
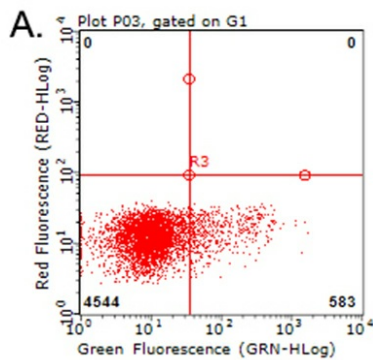
Product images:



Flow cytometric analysis of living 293T cells transfected with TNFRSF9 overexpression plasmid ([RC200664], Red)/empty vector ([PS100001], Blue) using anti-TNFRSF9 antibody ([TA813096]). Cells incubated with a non-specific antibody (Green) were used as isotype control (1:100).



Flow cytometric analysis of living PBMCs treated with 10ug/ml PHA for 72h (Right)/untreated (Left) using anti-TNFRSF9 antibody ([TA813096]) (1:100).



Flow cytometric analysis of living PBMCs treated with 10ug/ml PHA for 72h (Right) using anti-TNFRSF9 antibody ([TA813096]). Cells incubated with a non-specific antibody (Left) were used as isotype control (1:100).