

Product datasheet for **TA813079AM**

B7-2 (CD86) Mouse Monoclonal Antibody (Biotin conjugated) [Clone ID: OTI11C8]

Product data:

Product Type:	Primary Antibodies
Clone Name:	OTI11C8
Applications:	FC, WB
Recommended Dilution:	WB 1:500~1000, FLOW 1:100
Reactivity:	Human
Host:	Mouse
Isotype:	IgG2a
Clonality:	Monoclonal
Immunogen:	Full length human recombinant protein of human CD86 (NP_787058) produced in HEK293T cell.
Formulation:	PBS (pH 7.3) containing 1% BSA, 50% glycerol and 0.02% sodium azide.
Concentration:	0.5 mg/ml
Purification:	Purified from mouse ascites fluids or tissue culture supernatant by affinity chromatography (protein A/G)
Conjugation:	Biotin
Storage:	Store at -20°C as received.
Stability:	Stable for 12 months from date of receipt.
Predicted Protein Size:	38.1 kDa
Gene Name:	CD86 molecule
Database Link:	NP_787058 Entrez Gene 942 Human P42081



[View online »](#)

Background:

This gene encodes a type I membrane protein that is a member of the immunoglobulin superfamily. This protein is expressed by antigen-presenting cells, and it is the ligand for two proteins at the cell surface of T cells, CD28 antigen and cytotoxic T-lymphocyte-associated protein 4. Binding of this protein with CD28 antigen is a costimulatory signal for activation of the T-cell. Binding of this protein with cytotoxic T-lymphocyte-associated protein 4 negatively regulates T-cell activation and diminishes the immune response. Alternative splicing results in several transcript variants encoding different isoforms. [provided by RefSeq, May 2011]

Synonyms:

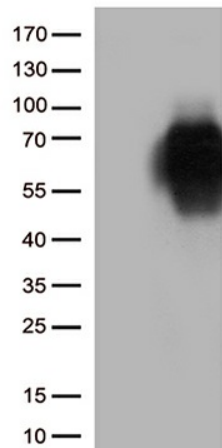
B7-2; B7.2; B70; CD28LG2; LAB72

Protein Families:

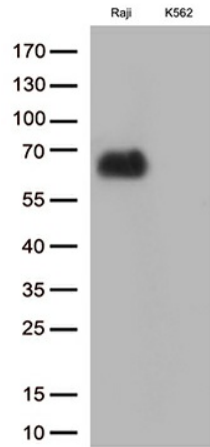
Druggable Genome, Transcription Factors, Transmembrane

Protein Pathways:

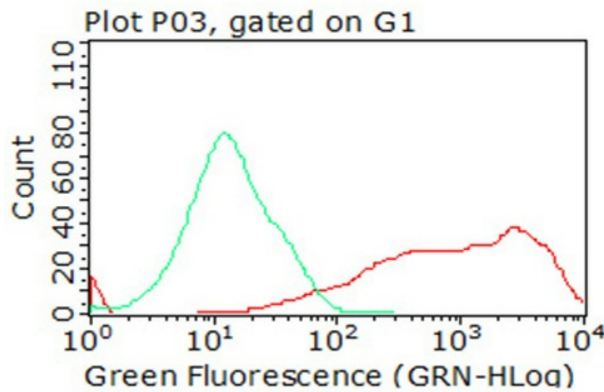
Allograft rejection, Autoimmune thyroid disease, Cell adhesion molecules (CAMs), Graft-versus-host disease, Systemic lupus erythematosus, Toll-like receptor signaling pathway, Type I diabetes mellitus, Viral myocarditis

Product images:

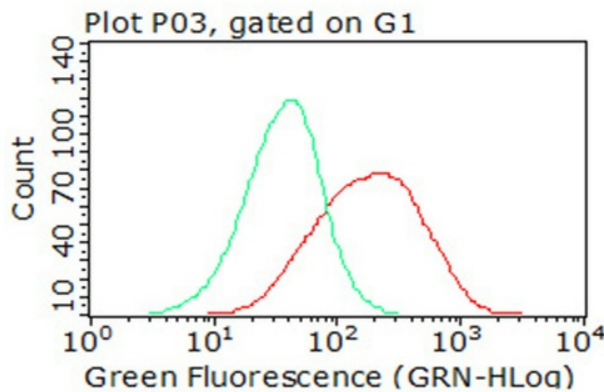
HEK293T cells were transfected with the pCMV6-ENTRY control (Left lane) or pCMV6-ENTRY CD86 ([RC217341], Right lane) cDNA for 48 hrs and lysed. Equivalent amounts of cell lysates (5 ug per lane) were separated by SDS-PAGE and immunoblotted with anti-CD86 (1:1000).



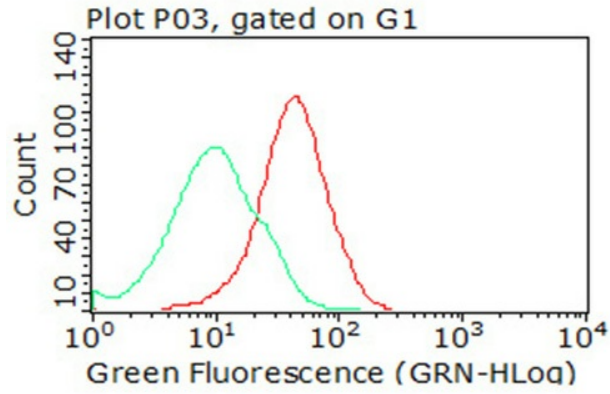
Western blot analysis of extracts (35ug) from 2 cell lines lysates by using anti-CD86 monoclonal antibody (1:500).



Flow cytometric analysis of living 293T cells transfected with CD86 overexpression plasmid ([RC217341], Red) using anti-CD86 antibody ([TA813079]). Cells incubated with a non-specific antibody (Green) were used as isotype control (1:100).



Flow cytometric analysis of living Raji cells, using anti-CD86 antibody ([TA813079], Red), compared to an isotype control (green) (1:100).



Flow cytometric analysis of living Ramos cells, using anti-CD86 antibody ([TA813079], Red), compared to an isotype control (green) (1:100).