

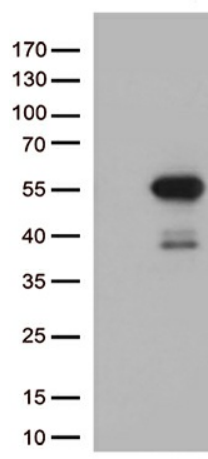
Product datasheet for **TA813067M**

MTRF1 Mouse Monoclonal Antibody [Clone ID: OTI5D5]

Product data:

Product Type:	Primary Antibodies
Clone Name:	OTI5D5
Applications:	WB
Recommended Dilution:	WB 1:500
Reactivity:	Human
Host:	Mouse
Isotype:	IgG1
Clonality:	Monoclonal
Immunogen:	Human recombinant protein fragment corresponding to amino acids 240-445 of human MTRF1 (NP_004285) produced in E.coli.
Formulation:	PBS (pH 7.3) containing 1% BSA, 50% glycerol and 0.02% sodium azide.
Concentration:	1 mg/ml
Purification:	Purified from mouse ascites fluids or tissue culture supernatant by affinity chromatography (protein A/G)
Conjugation:	Unconjugated
Storage:	Store at -20°C as received.
Stability:	Stable for 12 months from date of receipt.
Predicted Protein Size:	52.1 kDa
Gene Name:	mitochondrial translational release factor 1
Database Link:	NP_004285 Entrez Gene 9617 Human O75570
Background:	Mitochondrial peptide chain release factor that directs the termination of translation in response to the peptide chain non-cognate termination stop codons AGG and AGA. [UniProtKB/Swiss-Prot Function]
Synonyms:	MRF1; MTTRF1; RF1


[View online »](#)

Product images:

HEK293T cells were transfected with the pCMV6-ENTRY control (Left lane) or pCMV6-ENTRY MTRF1 ([RC207912], Right lane) cDNA for 48 hrs and lysed. Equivalent amounts of cell lysates (5 ug per lane) were separated by SDS-PAGE and immunoblotted with anti-MTRF1 (1:500).