

## Product datasheet for **TA813065AM**

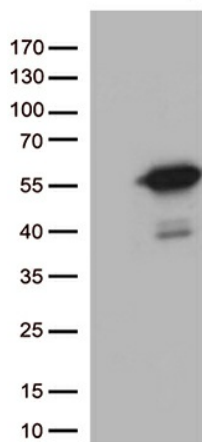
### **MTRF1 Mouse Monoclonal Antibody (Biotin conjugated) [Clone ID: OTI2D3]**

#### **Product data:**

Product Type:	Primary Antibodies
Clone Name:	OTI2D3
Applications:	WB
Recommended Dilution:	WB 1:500
Reactivity:	Human
Host:	Mouse
Isotype:	IgG1
Clonality:	Monoclonal
Immunogen:	Human recombinant protein fragment corresponding to amino acids 240-445 of human MTRF1 (NP_004285) produced in E.coli.
Formulation:	PBS (pH 7.3) containing 1% BSA, 50% glycerol and 0.02% sodium azide.
Concentration:	0.5 mg/ml
Purification:	Purified from mouse ascites fluids or tissue culture supernatant by affinity chromatography (protein A/G)
Conjugation:	Biotin
Storage:	Store at -20°C as received.
Stability:	Stable for 12 months from date of receipt.
Predicted Protein Size:	52.1 kDa
Gene Name:	mitochondrial translational release factor 1
Database Link:	<a href="#">NP_004285</a> <a href="#">Entrez Gene 9617 Human</a> <a href="#">O75570</a>
Background:	Mitochondrial peptide chain release factor that directs the termination of translation in response to the peptide chain non-cognate termination stop codons AGG and AGA. [UniProtKB/Swiss-Prot Function]
Synonyms:	MRF1; MTTRF1; RF1



[View online »](#)

**Product images:**

HEK293T cells were transfected with the pCMV6-ENTRY control (Left lane) or pCMV6-ENTRY MTRF1 ([RC207912], Right lane) cDNA for 48 hrs and lysed. Equivalent amounts of cell lysates (5 ug per lane) were separated by SDS-PAGE and immunoblotted with anti-MTRF1 (1:500).