

## Product datasheet for **TA813064S**

### Sortilin (SORT1) Mouse Monoclonal Antibody [Clone ID: OTI3H4]

#### Product data:

Product Type:	Primary Antibodies
Clone Name:	OTI3H4
Applications:	WB
Recommended Dilution:	WB 1:500
Reactivity:	Human, Mouse, Rat
Host:	Mouse
Isotype:	IgG1
Clonality:	Monoclonal
Immunogen:	Human recombinant protein fragment corresponding to amino acids 34-300 of human SORT1 (NP_002950) produced in E.coli.
Formulation:	PBS (pH 7.3) containing 1% BSA, 50% glycerol and 0.02% sodium azide.
Concentration:	1 mg/ml
Purification:	Purified from mouse ascites fluids or tissue culture supernatant by affinity chromatography (protein A/G)
Conjugation:	Unconjugated
Storage:	Store at -20°C as received.
Stability:	Stable for 12 months from date of receipt.
Gene Name:	sortilin 1
Database Link:	<a href="#">NP_002950</a> <a href="#">Entrez Gene 6272 Human</a> <a href="#">Q99523</a>
Background:	This gene encodes a member of the VPS10-related sortilin family of proteins. The encoded preproprotein is proteolytically processed by furin to generate the mature receptor. This receptor plays a role in the trafficking of different proteins to either the cell surface, or subcellular compartments such as lysosomes and endosomes. Expression levels of this gene may influence the risk of myocardial infarction in human patients. Alternative splicing results in multiple transcript variants. [provided by RefSeq, Oct 2015]
Synonyms:	Gp95; LDLCQ6; NT3; NTR3

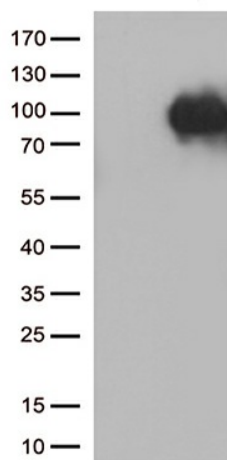


[View online »](#)

**Protein Families:** Druggable Genome, Transmembrane

**Protein Pathways:** Lysosome, Neurotrophin signaling pathway

**Product images:**



HEK293T cells were transfected with the pCMV6-ENTRY control (Cat# [PS100001], Left lane) or pCMV6-ENTRY SORT1 (Cat# [RC203429], Right lane) cDNA for 48 hrs and lysed. Equivalent amounts of cell lysates (5 ug per lane) were separated by SDS-PAGE and immunoblotted with anti-SORT1 (Cat# [TA813064])(1:500).