

Product datasheet for **TA813060**

Pancreatic Polypeptide (PPY) Mouse Monoclonal Antibody [Clone ID: OTI1G2]

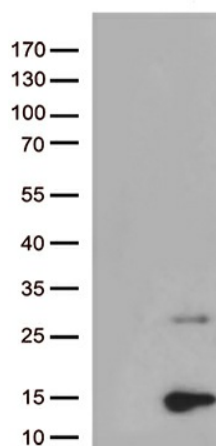
Product data:

Product Type:	Primary Antibodies
Clone Name:	OTI1G2
Applications:	WB
Recommended Dilution:	WB 1:500
Reactivity:	Human
Host:	Mouse
Isotype:	IgG2a
Clonality:	Monoclonal
Immunogen:	Human recombinant protein fragment corresponding to amino acids 30-88 of human PPY (NP_002713) produced in E.coli.
Formulation:	PBS (pH 7.3) containing 1% BSA, 50% glycerol and 0.02% sodium azide.
Concentration:	1 mg/ml
Purification:	Purified from mouse ascites fluids or tissue culture supernatant by affinity chromatography (protein A/G)
Conjugation:	Unconjugated
Storage:	Store at -20°C as received.
Stability:	Stable for 12 months from date of receipt.
Gene Name:	pancreatic polypeptide
Database Link:	NP_002713 Entrez Gene 5539 Human P01298
Background:	The physiological role for the icosapeptide has not yet been elucidated. [UniProtKB/Swiss-Prot Function]
Synonyms:	PNP; PP
Protein Families:	Secreted Protein



[View online »](#)

Product images:



HEK293T cells were transfected with the pCMV6-ENTRY control (Cat# [PS100001], Left lane) or pCMV6-ENTRY PPY (Cat# [RC206584], Right lane) cDNA for 48 hrs and lysed. Equivalent amounts of cell lysates (5 ug per lane) were separated by SDS-PAGE and immunoblotted with anti-PPY (Cat# TA813060)(1:500).