

Product datasheet for **TA813059S**

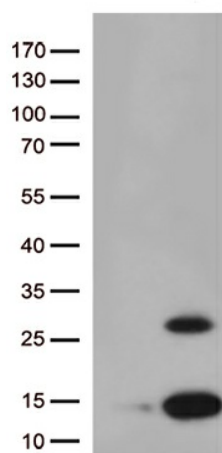
Pancreatic Polypeptide (PPY) Mouse Monoclonal Antibody [Clone ID: OTI1G7]

Product data:

| | |
|-----------------------|--|
| Product Type: | Primary Antibodies |
| Clone Name: | OTI1G7 |
| Applications: | WB |
| Recommended Dilution: | WB 1:500 |
| Reactivity: | Human |
| Host: | Mouse |
| Isotype: | IgG1 |
| Clonality: | Monoclonal |
| Immunogen: | Human recombinant protein fragment corresponding to amino acids 30-88 of human PPY (NP_002713) produced in E.coli. |
| Formulation: | PBS (pH 7.3) containing 1% BSA, 50% glycerol and 0.02% sodium azide. |
| Concentration: | 1 mg/ml |
| Purification: | Purified from mouse ascites fluids or tissue culture supernatant by affinity chromatography (protein A/G) |
| Conjugation: | Unconjugated |
| Storage: | Store at -20°C as received. |
| Stability: | Stable for 12 months from date of receipt. |
| Gene Name: | pancreatic polypeptide |
| Database Link: | NP_002713 Entrez Gene 5539 Human P01298 |
| Background: | The physiological role for the icosapeptide has not yet been elucidated. [UniProtKB/Swiss-Prot Function] |
| Synonyms: | PNP; PP |
| Protein Families: | Secreted Protein |



[View online »](#)

Product images:

HEK293T cells were transfected with the pCMV6-ENTRY control (Left lane) or pCMV6-ENTRY PPY ([RC206584], Right lane) cDNA for 48 hrs and lysed. Equivalent amounts of cell lysates (5 ug per lane) were separated by SDS-PAGE and immunoblotted with anti-PPY (1:500).