

Product datasheet for **TA813055AM**

EWSR1 Mouse Monoclonal Antibody (Biotin conjugated) [Clone ID: OTI2G3]

Product data:

Product Type:	Primary Antibodies
Clone Name:	OTI2G3
Applications:	IHC, WB
Recommended Dilution:	WB 1:500, IHC 1:500
Reactivity:	Human
Host:	Mouse
Isotype:	IgG1
Clonality:	Monoclonal
Immunogen:	Human recombinant protein fragment corresponding to amino acids 256-447 of human EWSR1 (NP_005234) produced in E.coli.
Formulation:	PBS (pH 7.3) containing 1% BSA, 50% glycerol and 0.02% sodium azide.
Concentration:	0.5 mg/ml
Purification:	Purified from mouse ascites fluids or tissue culture supernatant by affinity chromatography (protein A/G)
Conjugation:	Biotin
Storage:	Store at -20°C as received.
Stability:	Stable for 12 months from date of receipt.
Predicted Protein Size:	68.3 kDa
Gene Name:	EWS RNA binding protein 1
Database Link:	NP_005234 Entrez Gene 2130 Human Q01844



[View online »](#)

Background:

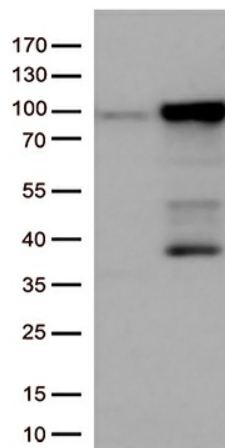
This gene encodes a multifunctional protein that is involved in various cellular processes, including gene expression, cell signaling, and RNA processing and transport. The protein includes an N-terminal transcriptional activation domain and a C-terminal RNA-binding domain. Chromosomal translocations between this gene and various genes encoding transcription factors result in the production of chimeric proteins that are involved in tumorigenesis. These chimeric proteins usually consist of the N-terminal transcriptional activation domain of this protein fused to the C-terminal DNA-binding domain of the transcription factor protein. Mutations in this gene, specifically a t(11;22)(q24;q12) translocation, are known to cause Ewing sarcoma as well as neuroectodermal and various other tumors. Alternative splicing of this gene results in multiple transcript variants. Related pseudogenes have been identified on chromosomes 1 and 14. [provided by RefSeq, Jul 2009]

Synonyms:

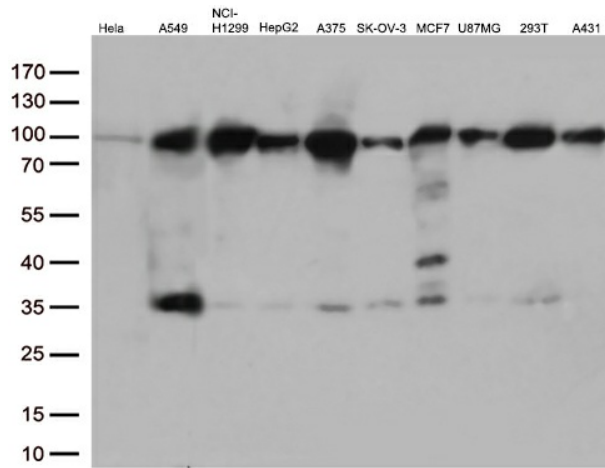
bK984G1.4; EWS; EWS-FLI1

Protein Families:

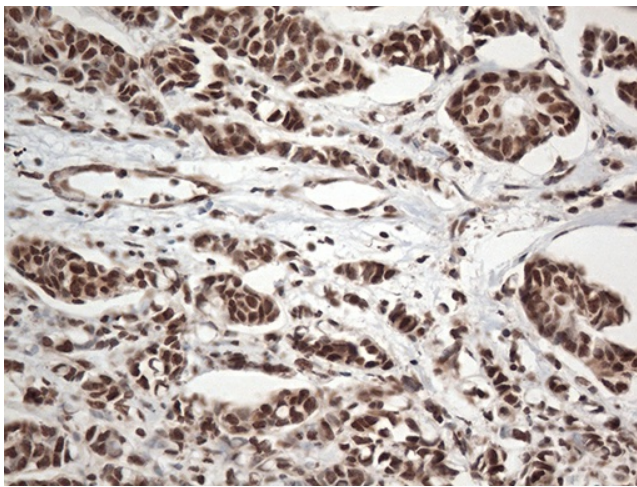
Druggable Genome, Stem cell - Pluripotency, Transcription Factors

Product images:

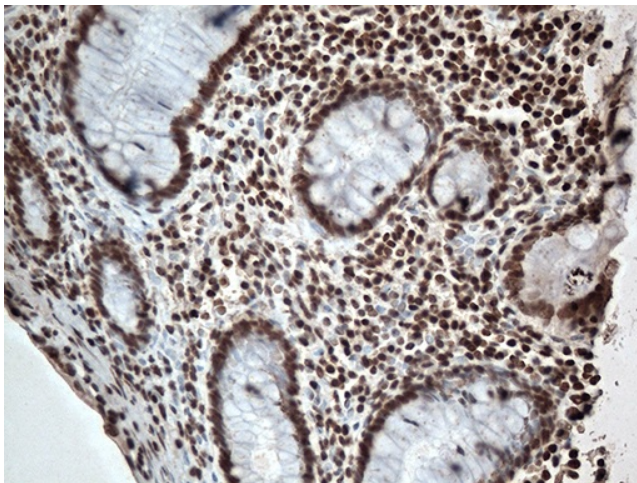
HEK293T cells were transfected with the pCMV6-ENTRY control (Left lane) or pCMV6-ENTRY EWSR1 ([RC203709], Right lane) cDNA for 48 hrs and lysed. Equivalent amounts of cell lysates (5 ug per lane) were separated by SDS-PAGE and immunoblotted with anti-EWSR1 (1:500).



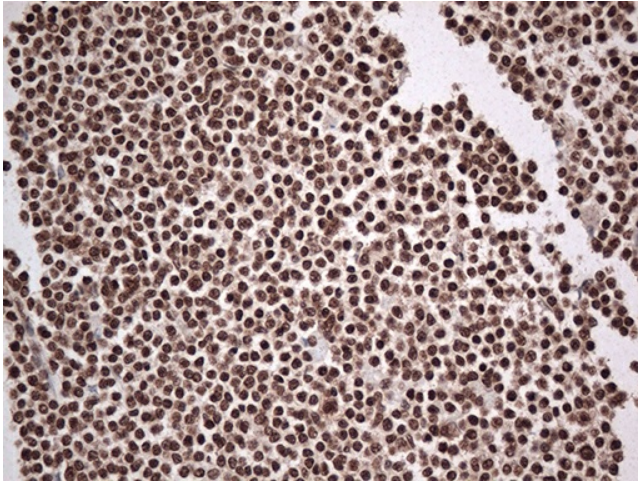
Western blot analysis of extracts (35ug) from 10 different cell lines by using anti-EWSR1 monoclonal antibody (1:500).



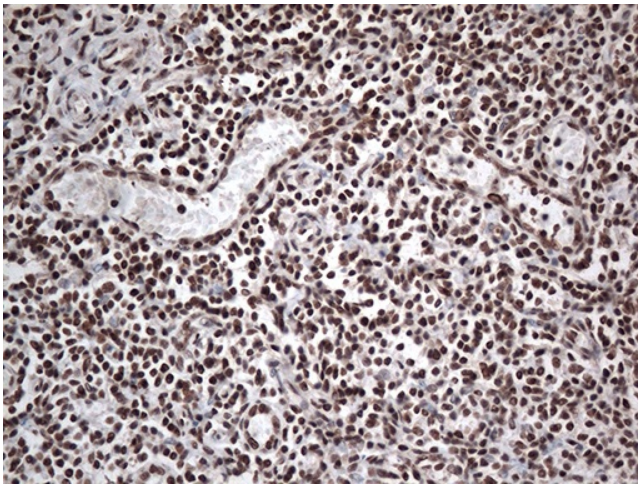
Immunohistochemical staining of paraffin-embedded Adenocarcinoma of Human breast tissue using anti-EWSR1 mouse monoclonal antibody. (Heat-induced epitope retrieval by 1mM EDTA in 10mM Tris buffer (pH8.5) at 120°C for 3min, [TA813055]) (1:500)



Immunohistochemical staining of paraffin-embedded Adenocarcinoma of Human colon tissue using anti-EWSR1 mouse monoclonal antibody. (Heat-induced epitope retrieval by 1mM EDTA in 10mM Tris buffer (pH8.5) at 120°C for 3min, [TA813055]) (1:500)



Immunohistochemical staining of paraffin-embedded Human lymphoma tissue using anti-EWSR1 mouse monoclonal antibody. (Heat-induced epitope retrieval by 1mM EDTA in 10mM Tris buffer (pH8.5) at 120°C for 3min, [TA813055]) (1:500)



Immunohistochemical staining of paraffin-embedded Human tonsil within the normal limits using anti-EWSR1 mouse monoclonal antibody. (Heat-induced epitope retrieval by 1mM EDTA in 10mM Tris buffer (pH8.5) at 120°C for 3min, [TA813055]) (1:500)