

Product datasheet for **TA813033S**

TIGIT Mouse Monoclonal Antibody [Clone ID: OTI1E6]

Product data:

Product Type:	Primary Antibodies
Clone Name:	OTI1E6
Applications:	FC, WB
Recommended Dilution:	WB 1:1000, FLOW 1:100
Reactivity:	Human
Host:	Mouse
Isotype:	IgG2b
Clonality:	Monoclonal
Immunogen:	Full length human recombinant protein of human TIGIT (NP_776160) produced in HEK293T cell.
Formulation:	PBS (pH 7.3) containing 1% BSA, 50% glycerol and 0.02% sodium azide.
Concentration:	1 mg/ml
Purification:	Purified from mouse ascites fluids or tissue culture supernatant by affinity chromatography (protein A/G)
Conjugation:	Unconjugated
Storage:	Store at -20°C as received.
Stability:	Stable for 12 months from date of receipt.
Predicted Protein Size:	26.1 kDa
Gene Name:	T-cell immunoreceptor with Ig and ITIM domains
Database Link:	NP_776160 Entrez Gene 201633 Human Q495A1
Background:	This gene encodes a member of the PVR (poliovirus receptor) family of immunoglobulin proteins. The product of this gene is expressed on several classes of T cells including follicular B helper T cells (TFH). The protein has been shown to bind PVR with high affinity; this binding is thought to assist interactions between TFH and dendritic cells to regulate T cell dependent B cell responses. [provided by RefSeq, Sep 2009]

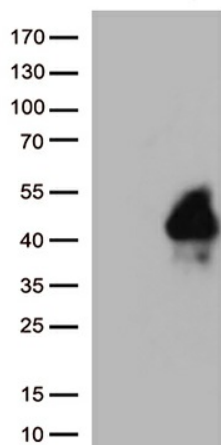


[View online »](#)

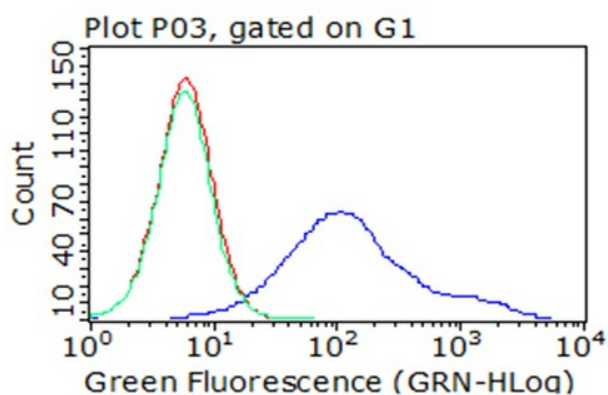
Synonyms: VSIG9; VSTM3; WUCAM

Protein Families: Transmembrane

Product images:



HEK293T cells were transfected with the pCMV6-ENTRY control (Cat# [PS100001], Left lane) or pCMV6-ENTRY TIGIT (Cat# [RC221447], Right lane) cDNA for 48 hrs and lysed. Equivalent amounts of cell lysates (5 ug per lane) were separated by SDS-PAGE and immunoblotted with anti-TIGIT (Cat# [TA813033])(1:1000).



Flow cytometric analysis of living 293T cells transfected with TIGIT overexpression plasmid ([RC221447], Red)/empty vector ([PS100001], Blue) using anti-TIGIT antibody ([TA813033]). Cells incubated with a non-specific antibody (Green) were used as isotype control (1:100).