

## Product datasheet for **TA813024S**

### Lymphocyte Activation Gene 3 (LAG3) Mouse Monoclonal Antibody [Clone ID: OTI7G1]

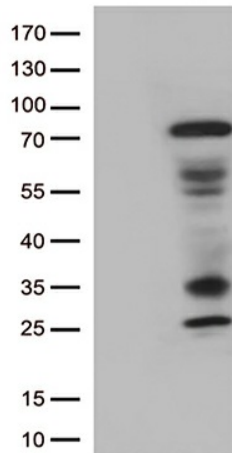
#### Product data:

Product Type:	Primary Antibodies
Clone Name:	OTI7G1
Applications:	FC, WB
Recommended Dilution:	WB 1:500, FLOW 1:100
Reactivity:	Human
Host:	Mouse
Isotype:	IgG2a
Clonality:	Monoclonal
Immunogen:	Full length human recombinant protein of human LAG3 (NP_002277) produced in HEK293T cell.
Formulation:	PBS (pH 7.3) containing 1% BSA, 50% glycerol and 0.02% sodium azide.
Concentration:	1 mg/ml
Purification:	Purified from mouse ascites fluids or tissue culture supernatant by affinity chromatography (protein A/G)
Conjugation:	Unconjugated
Storage:	Store at -20°C as received.
Stability:	Stable for 12 months from date of receipt.
Predicted Protein Size:	57.45 kDa
Gene Name:	lymphocyte activating 3
Database Link:	<a href="#">NP_002277</a> <a href="#">Entrez Gene 3902 Human</a> <a href="#">P18627</a>
Background:	Involved in lymphocyte activation. Binds to HLA class-II antigens. [UniProtKB/Swiss-Prot Function]
Synonyms:	CD223
Protein Families:	Transmembrane

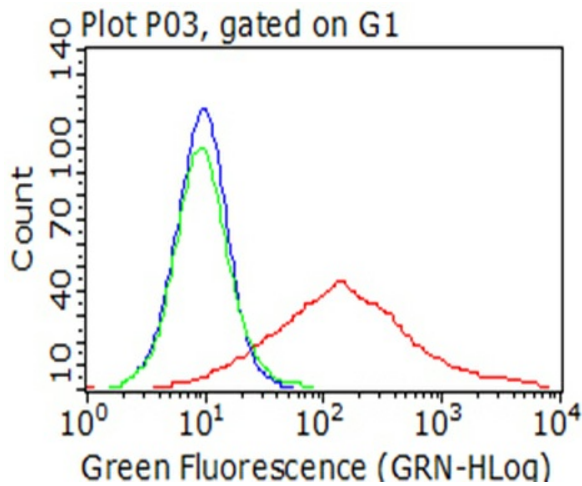


[View online »](#)

**Product images:**



HEK293T cells were transfected with the pCMV6-ENTRY control (Left lane) or pCMV6-ENTRY LAG3 ([RC220269], Right lane) cDNA for 48 hrs and lysed. Equivalent amounts of cell lysates (5 ug per lane) were separated by SDS-PAGE and immunoblotted with anti-LAG3 (1:500).



Flow cytometric analysis of living 293T cells transfected with LAG3 overexpression plasmid ([RC220269]), Red/empty vector ([PS100001], Blue) using anti-LAG3 antibody ([TA813024]). Cells incubated with a non-specific antibody (Green) were used as isotype control (1:100).