

Product datasheet for **TA813015AM**

PD-L1 (CD274) Human Monoclonal Antibody (Biotin conjugated) [Clone ID: OTI8C8]

Product data:

Product Type:	Primary Antibodies
Clone Name:	OTI8C8
Applications:	FC
Recommended Dilution:	FLOW 1:50~100
Reactivity:	Human
Host:	Human
Isotype:	IgG1
Clonality:	Monoclonal
Formulation:	PBS (PH 7.3)
Concentration:	0.5 mg/ml
Purification:	Purified from mouse ascites fluids or tissue culture supernatant by affinity chromatography (protein A/G)
Conjugation:	Biotin
Storage:	Store at -20°C as received.
Stability:	Stable for 12 months from date of receipt.
Predicted Protein Size:	33.28 kDa
Gene Name:	CD274 molecule
Database Link:	NP_054862 Entrez Gene 29126 Human Q9NZQ7



[View online »](#)

Background:

This gene encodes an immune inhibitory receptor ligand that is expressed by hematopoietic and non-hematopoietic cells, such as T cells and B cells and various types of tumor cells. The encoded protein is a type I transmembrane protein that has immunoglobulin V-like and C-like domains. Interaction of this ligand with its receptor inhibits T-cell activation and cytokine production. During infection or inflammation of normal tissue, this interaction is important for preventing autoimmunity by maintaining homeostasis of the immune response. In tumor microenvironments, this interaction provides an immune escape for tumor cells through cytotoxic T-cell inactivation. Expression of this gene in tumor cells is considered to be prognostic in many types of human malignancies, including colon cancer and renal cell carcinoma. Alternative splicing results in multiple transcript variants. [provided by RefSeq, Sep 2015]

Synonyms:

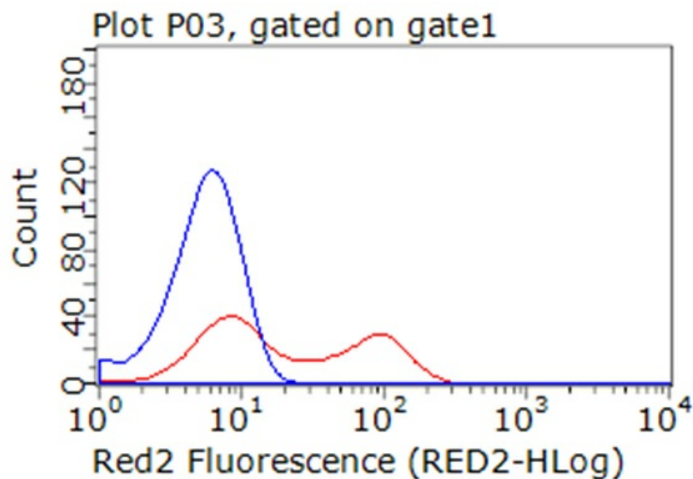
B7-H; B7H1; hPD-L1; PD-L1; PDCD1L1; PDCD1LG1; PDL1

Protein Families:

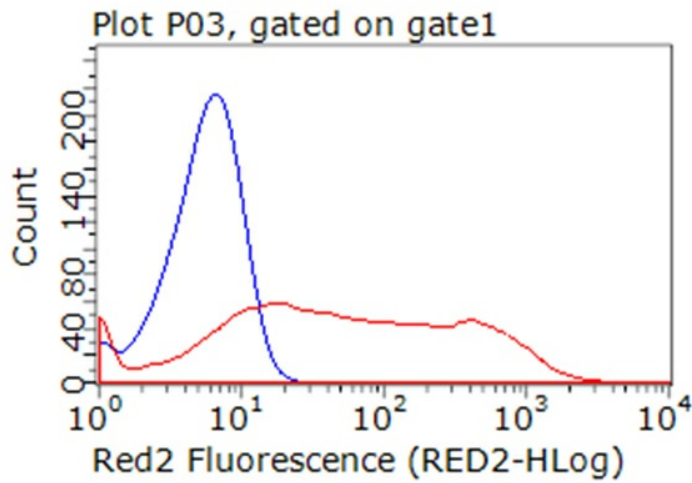
Druggable Genome, Transmembrane

Protein Pathways:

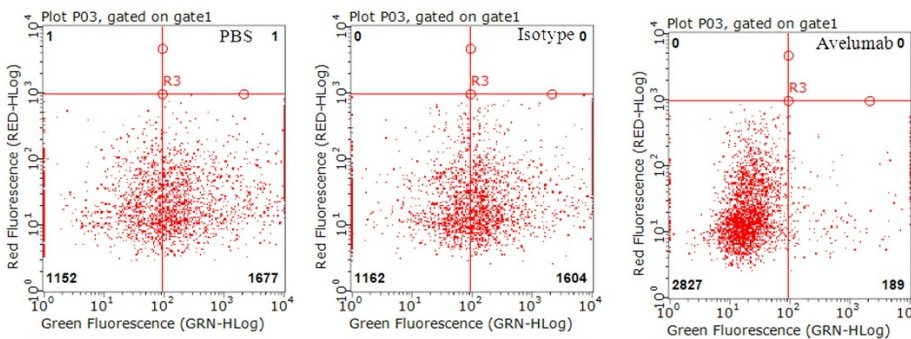
Cell adhesion molecules (CAMs)

Product images:

Flow cytometric Analysis of living HCC78 cells, using anti-PDL1 antibody ([TA813015], Avelumab, red), compared to an IgG isotype control (blue) (1:100).



Flow cytometric analysis of living PDL1/CD274 stable expression cells using anti-CD274 antibody ([TA813015], Avelumab) (Red) compared to an IgG isotype control antibody (Blue) (1:100).



Detection of PDL1 neutralizing antibody using MACS column. GFP+/PDL1+ 293T cells (co-transfected with PDL1 and GFP plasmid ([RC213071], PS10010) were incubated with either PDL1 antibody [TA813015], Avelumab (right), negative control antibody (middle) or PBS (left) and then mixed with PD1+ 293T cells ([RC210364]) linked with magnetic-beads. The mixed cells were pulled down using MACS column (Miltenyi Biotec) and analysed by Flow Cytometry. GFP+/PDL1+ cells would not be collected if PD1/PDL1 interaction is neutralized by the tested antibody (1:50).