

## Product datasheet for **TA813010AM**

### Complement C4B (C4B) Mouse Monoclonal Antibody (Biotin conjugated) [Clone ID: OTI1B2]

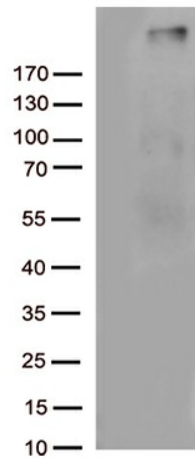
#### Product data:

Product Type:	Primary Antibodies
Clone Name:	OTI1B2
Applications:	WB
Recommended Dilution:	WB 1:500
Reactivity:	Human
Host:	Mouse
Isotype:	IgG2a
Clonality:	Monoclonal
Immunogen:	Human recombinant protein fragment corresponding to amino acids 1100-1350 of human C4B (NP_001002029) produced in E.coli.
Formulation:	PBS (pH 7.3) containing 1% BSA, 50% glycerol and 0.02% sodium azide.
Concentration:	0.5 mg/ml
Purification:	Purified from mouse ascites fluids or tissue culture supernatant by affinity chromatography (protein A/G)
Conjugation:	Biotin
Storage:	Store at -20°C as received.
Stability:	Stable for 12 months from date of receipt.
Gene Name:	complement component 4B (Chido blood group)
Database Link:	<a href="#">NP_001002029</a> <a href="#">Entrez Gene 721 Human</a> <a href="#">P0C0L4</a>
Background:	Derived from proteolytic degradation of complement C4, C4a anaphylatoxin is a mediator of local inflammatory process. It induces the contraction of smooth muscle, increases vascular permeability and causes histamine release from mast cells and basophilic leukocytes. [UniProtKB/Swiss-Prot Function]
Synonyms:	C4B1; C4B2; C4B3; C4B5; C4B12; C4BD; C4B_2; C4F; CH; CO4; CPAMD3
Protein Pathways:	Complement and coagulation cascades, Systemic lupus erythematosus



[View online »](#)

## Product images:



HEK293T cells were transfected with the pCMV6-ENTRY control (Cat# [PS100001], Left lane) or pCMV6-ENTRY C4B (Cat# [RC209211], Right lane) cDNA for 48 hrs and lysed. Equivalent amounts of cell lysates (5 ug per lane) were separated by SDS-PAGE and immunoblotted with anti-C4B (Cat# [TA813010])(1:500).