

## Product datasheet for **TA813008AM**

### CoREST (RCOR1) Mouse Monoclonal Antibody (Biotin conjugated) [Clone ID: OTI9F6]

#### Product data:

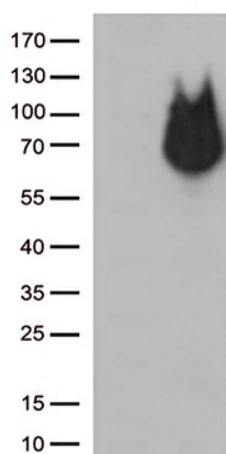
Product Type:	Primary Antibodies
Clone Name:	OTI9F6
Applications:	IHC, WB
Recommended Dilution:	WB 1:500, IHC 1:500
Reactivity:	Human, Mouse, Rat
Host:	Mouse
Isotype:	IgG1
Clonality:	Monoclonal
Immunogen:	Human recombinant protein fragment corresponding to amino acids 256-485 of human RCOR1 (NP_055971) produced in E.coli.
Formulation:	PBS (pH 7.3) containing 1% BSA, 50% glycerol and 0.02% sodium azide.
Concentration:	0.5 mg/ml
Purification:	Purified from mouse ascites fluids or tissue culture supernatant by affinity chromatography (protein A/G)
Conjugation:	Biotin
Storage:	Store at -20°C as received.
Stability:	Stable for 12 months from date of receipt.
Gene Name:	REST corepressor 1
Database Link:	<a href="#">NP_055971</a> <a href="#">Entrez Gene 217864 Mouse</a> <a href="#">Entrez Gene 102554884 Rat</a> <a href="#">Entrez Gene 23186 Human</a> <a href="#">Q9UKL0</a>
Background:	This gene encodes a protein that is well-conserved, downregulated at birth, and with a specific role in determining neural cell differentiation. The encoded protein binds to the C-terminal domain of REST (repressor element-1 silencing transcription factor). [provided by RefSeq, Aug 2011]
Synonyms:	COREST; RCOR
Protein Families:	Transcription Factors



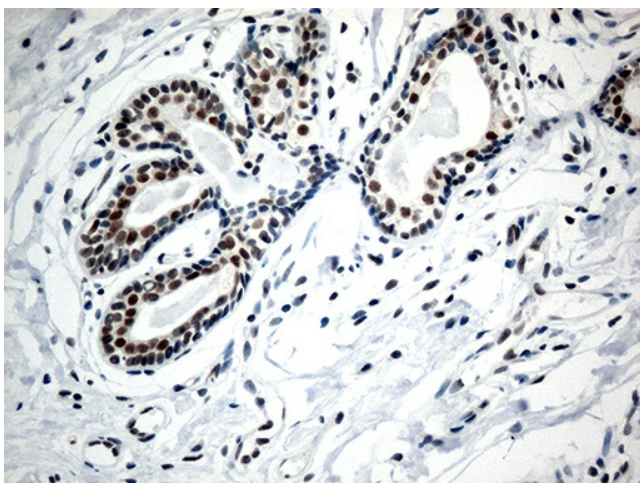
[View online »](#)

Protein Pathways: Huntington's disease

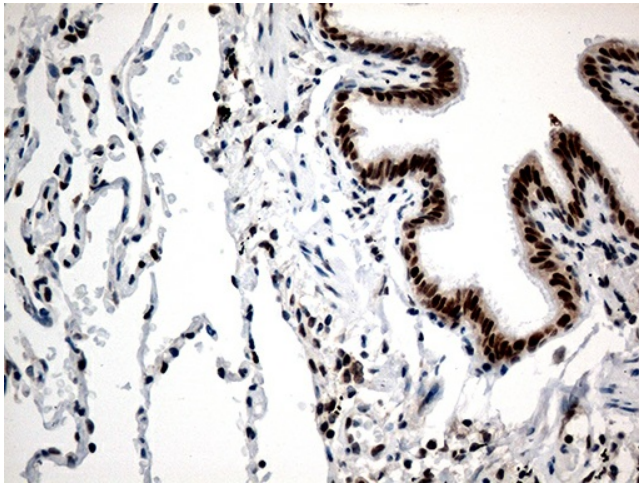
## Product images:



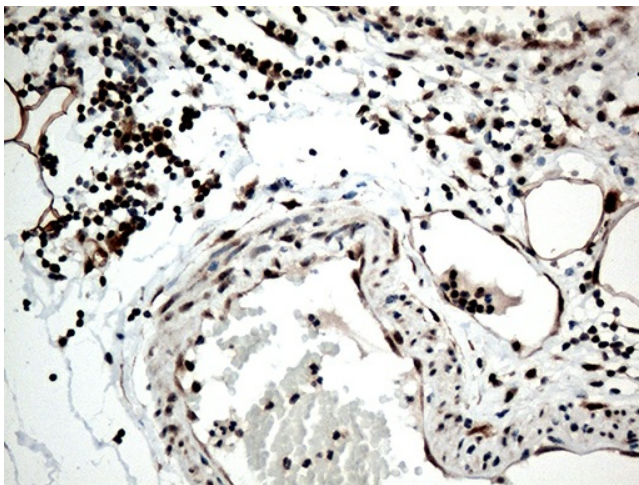
HEK293T cells were transfected with the pCMV6-ENTRY control (Cat# [PS100001], Left lane) or pCMV6-ENTRY RCOR1 (Cat# [RC224027], Right lane) cDNA for 48 hrs and lysed. Equivalent amounts of cell lysates (5 ug per lane) were separated by SDS-PAGE and immunoblotted with anti-RCOR1 (Cat# [TA813008])(1:500).



Immunohistochemical staining of paraffin-embedded Human breast tissue within the normal limits using anti-RCOR1 mouse monoclonal antibody. (Heat-induced epitope retrieval by 1mM EDTA in 10mM Tris buffer (pH8.5) at 120°C for 3min, [TA813008]) (1:500)



Immunohistochemical staining of paraffin-embedded Human lung tissue within the normal limits using anti-RCOR1 mouse monoclonal antibody. (Heat-induced epitope retrieval by 1mM EDTA in 10mM Tris buffer (pH8.5) at 120°C for 3min, [TA813008]) (1:500)



Immunohistochemical staining of paraffin-embedded Human appendix tissue within the normal limits using anti-RCOR1 mouse monoclonal antibody. (Heat-induced epitope retrieval by 1mM EDTA in 10mM Tris buffer (pH8.5) at 120°C for 3min, [TA813008]) (1:500)