

## Product datasheet for **TA812962BM**

### GNAL Mouse Monoclonal Antibody (HRP conjugated) [Clone ID: OTI2F3]

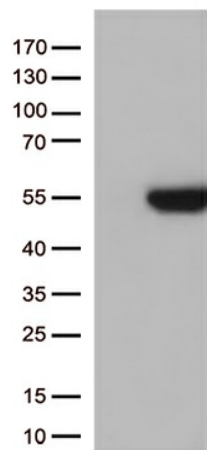
#### Product data:

Product Type:	Primary Antibodies
Clone Name:	OTI2F3
Applications:	WB
Recommended Dilution:	WB 1:500
Reactivity:	Human, Mouse, Rat
Host:	Mouse
Isotype:	IgG2b
Clonality:	Monoclonal
Immunogen:	Human recombinant protein fragment corresponding to amino acids 1-120 of human GNAL (NP_892023) produced in E.coli.
Formulation:	PBS (pH 7.3) containing 1% BSA, 50% glycerol.
Concentration:	0.5 mg/ml
Purification:	Purified from mouse ascites fluids or tissue culture supernatant by affinity chromatography (protein A/G)
Conjugation:	HRP
Storage:	Store at -20°C as received.
Stability:	Stable for 12 months from date of receipt.
Predicted Protein Size:	52.3 kDa
Gene Name:	G protein subunit alpha L
Database Link:	<a href="#">NP_892023</a> <a href="#">Entrez Gene 14680 Mouse</a> <a href="#">Entrez Gene 24611 Rat</a> <a href="#">Entrez Gene 2774 Human</a> <a href="#">P38405</a>
Background:	Guanine nucleotide-binding proteins (G proteins) are involved as modulators or transducers in various transmembrane signaling systems. G(olf) alpha mediates signal transduction within the olfactory neuroepithelium and the basal ganglia. May be involved in some aspect of visual transduction, and in mediating the effect of one or more hormones/neurotransmitters. [UniProtKB/Swiss-Prot Function]



[View online »](#)

**Synonyms:** DYT25  
**Protein Families:** Druggable Genome  
**Protein Pathways:** Calcium signaling pathway, Olfactory transduction

**Product images:**

HEK293T cells were transfected with the pCMV6-ENTRY control (Left lane) or pCMV6-ENTRY GNAL ([RC208226], Right lane) cDNA for 48 hrs and lysed. Equivalent amounts of cell lysates (5 ug per lane) were separated by SDS-PAGE and immunoblotted with anti-GNAL (1:500).