

Product datasheet for **TA812959**

USH1C Mouse Monoclonal Antibody [Clone ID: OTI2E12]

Product data:

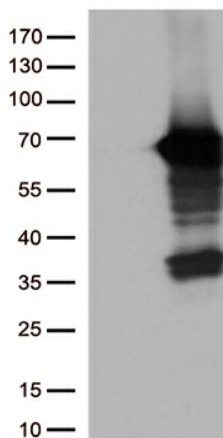
| | |
|-------------------------|--|
| Product Type: | Primary Antibodies |
| Clone Name: | OTI2E12 |
| Applications: | WB |
| Recommended Dilution: | WB 1:2000 |
| Reactivity: | Human, Mouse |
| Host: | Mouse |
| Isotype: | IgG1 |
| Clonality: | Monoclonal |
| Immunogen: | Human recombinant protein fragment corresponding to amino acids 294-552 of human USH1C (NP_005700) produced in E.coli. |
| Formulation: | PBS (pH 7.3) containing 1% BSA, 50% glycerol and 0.02% sodium azide. |
| Concentration: | 1 mg/ml |
| Purification: | Purified from mouse ascites fluids or tissue culture supernatant by affinity chromatography (protein A/G) |
| Conjugation: | Unconjugated |
| Storage: | Store at -20°C as received. |
| Stability: | Stable for 12 months from date of receipt. |
| Predicted Protein Size: | 62.2 kDa |
| Gene Name: | USH1 protein network component harmonin |
| Database Link: | NP_005700 Entrez Gene 72088 Mouse Entrez Gene 10083 Human Q9Y6N9 |
| Background: | This gene encodes a scaffold protein that functions in the assembly of Usher protein complexes. The protein contains PDZ domains, a coiled-coil region with a bipartite nuclear localization signal and a PEST degradation sequence. Defects in this gene are the cause of Usher syndrome type 1C and non-syndromic sensorineural deafness autosomal recessive type 18. Multiple transcript variants encoding different isoforms have been found for this gene. [provided by RefSeq, Mar 2009] |



[View online »](#)

Synonyms: AIE-75; DFNB18; DFNB18A; NY-CO-37; NY-CO-38; PDZ-45; PDZ-73; PDZ-73/NY-CO-38; PDZ73; PDZD7C; ush1cpst

Product images:



HEK293T cells were transfected with the pCMV6-ENTRY control (Cat# [PS100001], Left lane) or pCMV6-ENTRY USH1C (Cat# [RC215503], Right lane) cDNA for 48 hrs and lysed. Equivalent amounts of cell lysates (5 ug per lane) were separated by SDS-PAGE and immunoblotted with anti-USH1C (Cat# TA812959)(1:2000).