

## Product datasheet for **TA812949AM**

### ARSB Mouse Monoclonal Antibody (Biotin conjugated) [Clone ID: OTI4G7]

#### Product data:

Product Type:	Primary Antibodies
Clone Name:	OTI4G7
Applications:	WB
Recommended Dilution:	WB 1:500
Reactivity:	Human
Host:	Mouse
Isotype:	IgG1
Clonality:	Monoclonal
Immunogen:	Human recombinant protein fragment corresponding to amino acids 84-423 of human ARSB (NP_000037) produced in E.coli.
Formulation:	PBS (pH 7.3) containing 1% BSA, 50% glycerol and 0.02% sodium azide.
Concentration:	0.5 mg/ml
Purification:	Purified from mouse ascites fluids or tissue culture supernatant by affinity chromatography (protein A/G)
Conjugation:	Biotin
Storage:	Shipped at -20°C or with ice packs, Upon delivery store at -20°C. Dilute in PBS(pH7.3) if necessary. Stable for 12 months from date of receipt. Avoid repeated freeze-thaws.
Stability:	Stable for 12 months from date of receipt.
Predicted Protein Size:	59.69 kDa
Gene Name:	arylsulfatase B
Database Link:	<a href="#">NP_000037</a> <a href="#">Entrez Gene 411 Human P15848</a>



[View online »](#)

**Background:**

Arylsulfatase B encoded by this gene belongs to the sulfatase family. The arylsulfatase B homodimer hydrolyzes sulfate groups of N-Acetyl-D-galactosamine, chondroitin sulfate, and dermatan sulfate. The protein is targeted to the lysosome. Mucopolysaccharidosis type VI is an autosomal recessive lysosomal storage disorder resulting from a deficiency of arylsulfatase B. Two alternatively spliced transcript variants encoding distinct isoforms have been found for this gene. [provided by RefSeq, Dec 2016]

**Synonyms:**

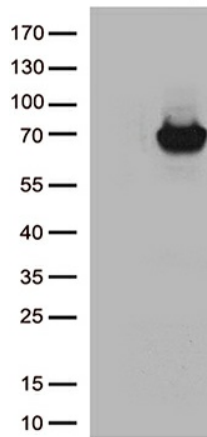
ASB; G4S; MPS6

**Protein Families:**

Druggable Genome

**Protein Pathways:**

Glycosaminoglycan degradation, Lysosome, Metabolic pathways

**Product images:**

HEK293T cells were transfected with the pCMV6-ENTRY control (Left lane) or pCMV6-ENTRY ARSB ([RC214604], Right lane) cDNA for 48 hrs and lysed. Equivalent amounts of cell lysates (5 ug per lane) were separated by SDS-PAGE and immunoblotted with anti-ARSB.(1:500)