

Product datasheet for **TA812935BM**

HLA-DQA2 Mouse Monoclonal Antibody (HRP conjugated) [Clone ID: OTI3E6]

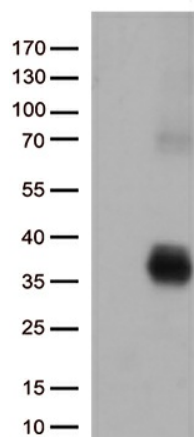
Product data:

Product Type:	Primary Antibodies
Clone Name:	OTI3E6
Applications:	WB
Recommended Dilution:	WB 1:500
Reactivity:	Human
Host:	Mouse
Isotype:	IgG1
Clonality:	Monoclonal
Immunogen:	Human recombinant protein fragment corresponding to amino acids 24-125 of human HLA-DQA2 (NP_064440) produced in E.coli.
Formulation:	PBS (pH 7.3) containing 1% BSA, 50% glycerol.
Concentration:	0.5 mg/ml
Purification:	Purified from mouse ascites fluids or tissue culture supernatant by affinity chromatography (protein A/G)
Conjugation:	HRP
Storage:	Store at -20°C as received.
Stability:	Stable for 12 months from date of receipt.
Predicted Protein Size:	27.9 kDa
Gene Name:	major histocompatibility complex, class II, DQ alpha 2
Database Link:	NP_064440 Entrez Gene 3118 Human P01906
Background:	This gene belongs to the HLA class II alpha chain family. The encoded protein forms a heterodimer with a class II beta chain. It is located in intracellular vesicles and plays a central role in the peptide loading of MHC class II molecules by helping to release the CLIP molecule from the peptide binding site. Class II molecules are expressed in antigen presenting cells (B lymphocytes, dendritic cells, macrophages) and are used to present antigenic peptides on the cell surface to be recognized by CD4 T-cells. [provided by RefSeq, Jun 2010]



[View online »](#)

Synonyms:	DC-alpha; DX-ALPHA; HLA-DCA; HLA-DXA; HLADQA2
Protein Families:	Transmembrane
Protein Pathways:	Allograft rejection, Antigen processing and presentation, Asthma, Autoimmune thyroid disease, Cell adhesion molecules (CAMs), Graft-versus-host disease, Systemic lupus erythematosus, Type I diabetes mellitus, Viral myocarditis

Product images:

HEK293T cells were transfected with the pCMV6-ENTRY control (Left lane) or pCMV6-ENTRY HLA-DQA2 ([RC223979], Right lane) cDNA for 48 hrs and lysed. Equivalent amounts of cell lysates (5 ug per lane) were separated by SDS-PAGE and immunoblotted with anti-HLA-DQA2 (1:500).