

Product datasheet for **TA812901BM**

NG2 (CSPG4) Mouse Monoclonal Antibody (HRP conjugated) [Clone ID: OTI3D3]

Product data:

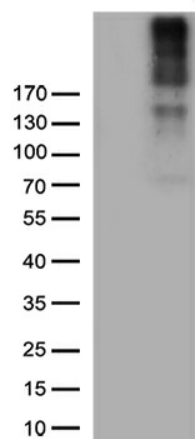
Product Type:	Primary Antibodies
Clone Name:	OTI3D3
Applications:	WB
Recommended Dilution:	WB 1:500
Reactivity:	Human
Host:	Mouse
Isotype:	IgG1
Clonality:	Monoclonal
Immunogen:	Human recombinant protein fragment corresponding to amino acids 1950-2210 of human CSPG4 (NP_001888) produced in E.coli.
Formulation:	PBS (pH 7.3) containing 1% BSA, 50% glycerol.
Concentration:	0.5 mg/ml
Purification:	Purified from mouse ascites fluids or tissue culture supernatant by affinity chromatography (protein A/G)
Conjugation:	HRP
Storage:	Store at -20°C as received.
Stability:	Stable for 12 months from date of receipt.
Predicted Protein Size:	250.4 kDa
Gene Name:	chondroitin sulfate proteoglycan 4
Database Link:	NP_001888 Entrez Gene 1464 Human Q6UVK1
Background:	A human melanoma-associated chondroitin sulfate proteoglycan plays a role in stabilizing cell-substratum interactions during early events of melanoma cell spreading on endothelial basement membranes. CSPG4 represents an integral membrane chondroitin sulfate proteoglycan expressed by human malignant melanoma cells. [provided by RefSeq, Jul 2008]
Synonyms:	CSPG4A; HMW-MAA; MCSP; MCSPG; MEL-CSPG; MSK16; NG2



[View online »](#)

Protein Families: Transmembrane

Product images:



HEK293T cells were transfected with the pCMV6-ENTRY control (Left lane) or pCMV6-ENTRY CSPG4 ([RC218462], Right lane) cDNA for 48 hrs and lysed. Equivalent amounts of cell lysates (5 ug per lane) were separated by SDS-PAGE and immunoblotted with anti-CSPG4 (1:500).