

Product datasheet for **TA812887AM**

ARTS1 (ERAP1) Mouse Monoclonal Antibody (Biotin conjugated) [Clone ID: OTI3G4]

Product data:

Product Type:	Primary Antibodies
Clone Name:	OTI3G4
Applications:	WB
Recommended Dilution:	WB 1:500
Reactivity:	Human, Mouse, Rat
Host:	Mouse
Isotype:	IgG1
Clonality:	Monoclonal
Immunogen:	Human recombinant protein fragment corresponding to amino acids 529-941 of human ERAP1 (NP_001035548) produced in E.coli.
Formulation:	PBS (pH 7.3) containing 1% BSA, 50% glycerol and 0.02% sodium azide.
Concentration:	0.5 mg/ml
Purification:	Purified from mouse ascites fluids or tissue culture supernatant by affinity chromatography (protein A/G)
Conjugation:	Biotin
Storage:	Store at -20°C as received.
Stability:	Stable for 12 months from date of receipt.
Predicted Protein Size:	107.1 kDa
Gene Name:	endoplasmic reticulum aminopeptidase 1
Database Link:	NP_001035548 Entrez Gene 80897 Rat Entrez Gene 80898 Mouse Entrez Gene 51752 Human Q9NZ08
Background:	The protein encoded by this gene is an aminopeptidase involved in trimming HLA class I-binding precursors so that they can be presented on MHC class I molecules. The encoded protein acts as a monomer or as a heterodimer with ERAP2. This protein may also be involved in blood pressure regulation by inactivation of angiotensin II. Three transcript variants encoding two different isoforms have been found for this gene. [provided by RefSeq, Oct 2010]

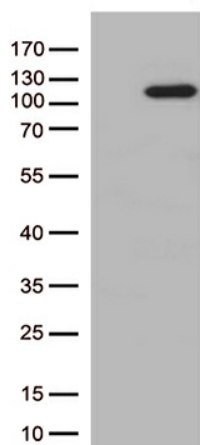


[View online »](#)

Synonyms: A-LAP; ALAP; APPILS; ARTS-1; ARTS1; ERAAP; ERAAP1; PILS-AP; PILSAP

Protein Families: Druggable Genome, Protease, Secreted Protein

Product images:



HEK293T cells were transfected with the pCMV6-ENTRY control (Left lane) or pCMV6-ENTRY ERAP1 ([RC205249], Right lane) cDNA for 48 hrs and lysed. Equivalent amounts of cell lysates (5 ug per lane) were separated by SDS-PAGE and immunoblotted with anti-ERAP1 (1:500).