

Product datasheet for **TA812874BM**

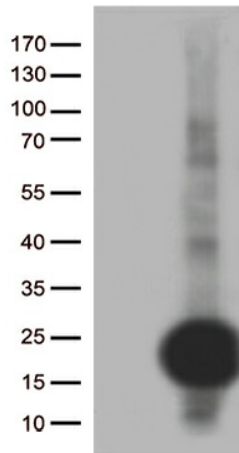
C20orf79 (SCP2D1) Mouse Monoclonal Antibody (HRP conjugated) [Clone ID: OTI6A6]

Product data:

Product Type:	Primary Antibodies
Clone Name:	OTI6A6
Applications:	WB
Recommended Dilution:	WB 1:500
Reactivity:	Human
Host:	Mouse
Isotype:	IgG1
Clonality:	Monoclonal
Immunogen:	Full length human recombinant protein of human C20orf79 (NP_848578) produced in E.coli.
Formulation:	PBS (pH 7.3) containing 1% BSA, 50% glycerol.
Concentration:	0.5 mg/ml
Purification:	Purified from mouse ascites fluids or tissue culture supernatant by affinity chromatography (protein A/G)
Conjugation:	HRP
Storage:	Store at -20°C as received.
Stability:	Stable for 12 months from date of receipt.
Predicted Protein Size:	17.5 kDa
Gene Name:	SCP2 sterol binding domain containing 1
Database Link:	NP_848578 Entrez Gene 140856 Human Q9UJQ7
Synonyms:	C20orf79; dj1068E13.2; HSD22



[View online »](#)

Product images:

HEK293T cells were transfected with the pCMV6-ENTRY control (Left lane) or pCMV6-ENTRY C20orf79 ([RC211269], Right lane) cDNA for 48 hrs and lysed. Equivalent amounts of cell lysates (5 ug per lane) were separated by SDS-PAGE and immunoblotted with anti-C20orf79 (1:500). Positive lysates [LY405885] (100ug) and [LC405885] (20ug) can be purchased separately from OriGene.