

## Product datasheet for **TA812872AM**

### **C20orf79 (SCP2D1) Mouse Monoclonal Antibody (Biotin conjugated) [Clone ID: OTI2G9]**

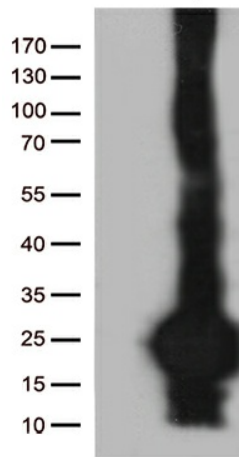
#### **Product data:**

|                         |   |
|-------------------------|---|
| Product Type:           | Primary Antibodies  |
| Clone Name:             | OTI2G9  |
| Applications:           | WB  |
| Recommended Dilution:   | WB 1:2000   |
| Reactivity:             | Human   |
| Host:                   | Mouse   |
| Isotype:                | IgG2a   |
| Clonality:              | Monoclonal  |
| Immunogen:              | Full length human recombinant protein of human C20orf79 (NP_848578) produced in E.coli.                   |
| Formulation:            | PBS (pH 7.3) containing 1% BSA, 50% glycerol and 0.02% sodium azide.                                      |
| Concentration:          | 0.5 mg/ml   |
| Purification:           | Purified from mouse ascites fluids or tissue culture supernatant by affinity chromatography (protein A/G) |
| Conjugation:            | Biotin  |
| Storage:                | Store at -20°C as received.   |
| Stability:              | Stable for 12 months from date of receipt.  |
| Predicted Protein Size: | 17.5 kDa  |
| Gene Name:              | SCP2 sterol binding domain containing 1   |
| Database Link:          | <a href="#">NP_848578</a><br><a href="#">Entrez Gene 140856 Human</a><br><a href="#">Q9UJQ7</a>           |
| Synonyms:               | C20orf79; dj1068E13.2; HSD22  |



[View online »](#)

## Product images:



HEK293T cells were transfected with the pCMV6-ENTRY control (Left lane) or pCMV6-ENTRY C20orf79 ([RC211269], Right lane) cDNA for 48 hrs and lysed. Equivalent amounts of cell lysates (5 ug per lane) were separated by SDS-PAGE and immunoblotted with anti-C20orf79 (1:2000). Positive lysates [LY405885] (100ug) and [LC405885] (20ug) can be purchased separately from OriGene.