

Product datasheet for **TA812846**

Cathepsin L (CTSL) Mouse Monoclonal Antibody [Clone ID: OTI5C8]

Product data:

Product Type:	Primary Antibodies
Clone Name:	OTI5C8
Applications:	IHC, WB
Recommended Dilution:	WB 1:500, IHC 1:500
Reactivity:	Human
Host:	Mouse
Isotype:	IgG1
Clonality:	Monoclonal
Immunogen:	Human recombinant protein fragment corresponding to amino acids 114-333 of human CTSL (NP_001903) produced in E.coli.
Formulation:	PBS (pH 7.3) containing 1% BSA, 50% glycerol and 0.02% sodium azide.
Concentration:	1 mg/ml
Purification:	Purified from mouse ascites fluids or tissue culture supernatant by affinity chromatography (protein A/G)
Conjugation:	Unconjugated
Storage:	Store at -20°C as received.
Stability:	Stable for 12 months from date of receipt.
Predicted Protein Size:	37.53 kDa
Gene Name:	cathepsin L
Database Link:	NP_001903 Entrez Gene 1514 Human P07711



[View online »](#)

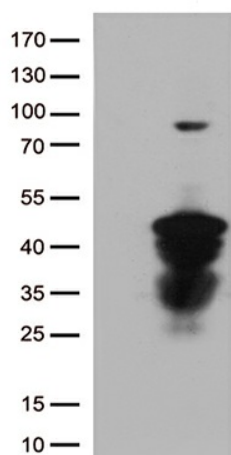
Background: The protein encoded by this gene is a lysosomal cysteine proteinase that plays a major role in intracellular protein catabolism. Its substrates include collagen and elastin, as well as alpha-1 protease inhibitor, a major controlling element of neutrophil elastase activity. The encoded protein has been implicated in several pathologic processes, including myofibril necrosis in myopathies and in myocardial ischemia, and in the renal tubular response to proteinuria. This protein, which is a member of the peptidase C1 family, is a dimer composed of disulfide-linked heavy and light chains, both produced from a single protein precursor. Multiple alternatively spliced transcript variants have been found for this gene. [provided by RefSeq, Apr 2012]

Synonyms: CATL; CTSL1; MEP

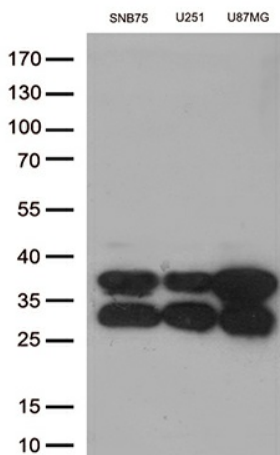
Protein Families: Druggable Genome, Protease

Protein Pathways: Antigen processing and presentation, Lysosome

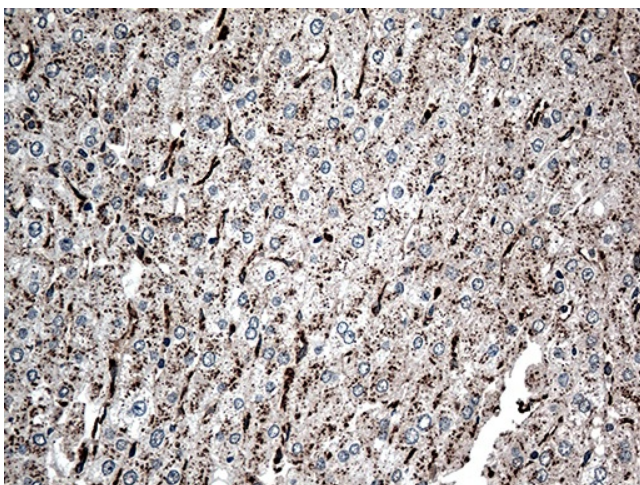
Product images:



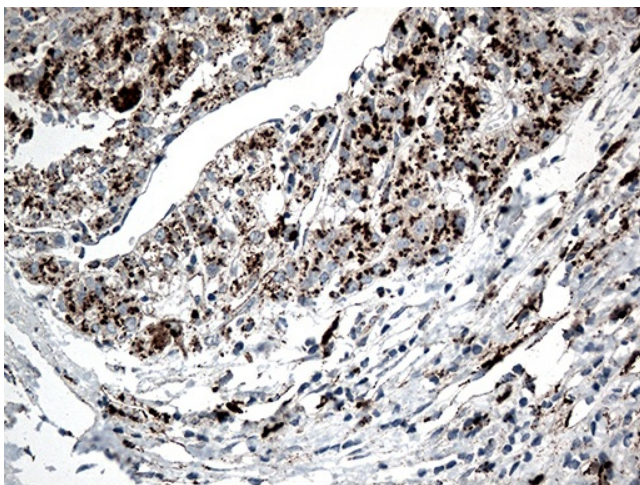
HEK293T cells were transfected with the pCMV6-ENTRY control (Left lane) or pCMV6-ENTRY CTSL ([RC203143], Right lane) cDNA for 48 hrs and lysed. Equivalent amounts of cell lysates (5 ug per lane) were separated by SDS-PAGE and immunoblotted with anti-CTSL (1:500). Positive lysates [LY400711] (100ug) and [LC400711] (20ug) can be purchased separately from OriGene.



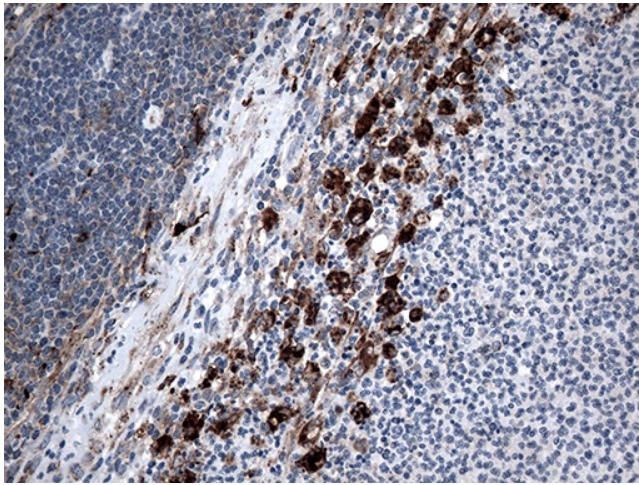
Western blot analysis of extracts (35ug) from 3 cell lines lysates by using anti-CTSL monoclonal antibody (1:500).



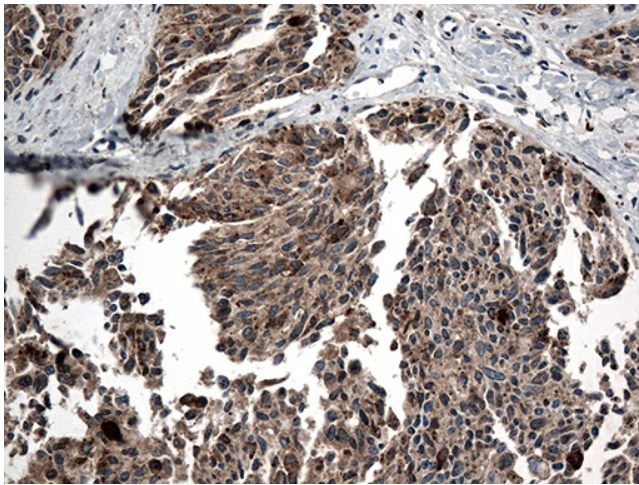
Immunohistochemical staining of paraffin-embedded Human liver tissue within the normal limits using anti-CTSL mouse monoclonal antibody. (Heat-induced epitope retrieval by 1mM EDTA in 10mM Tris buffer (pH8.5) at 120°C for 3min, TA812846) (1:500)



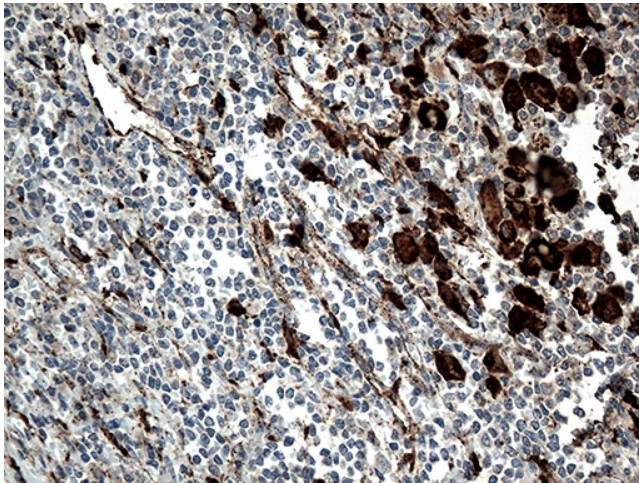
Immunohistochemical staining of paraffin-embedded Carcinoma of Human liver tissue using anti-CTSL mouse monoclonal antibody. (Heat-induced epitope retrieval by 1mM EDTA in 10mM Tris buffer (pH8.5) at 120°C for 3min, TA812846) (1:500)



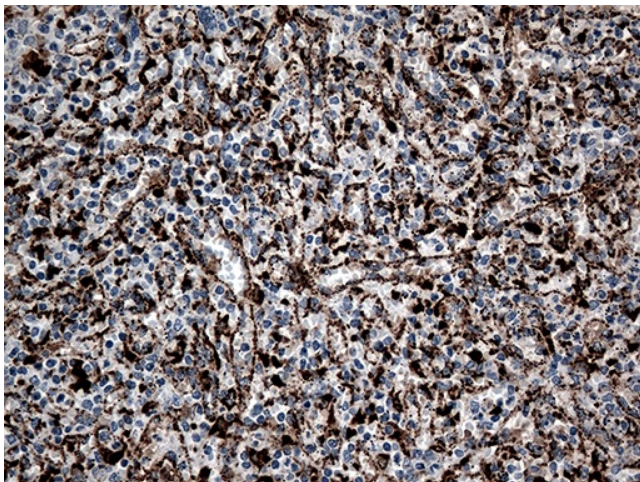
Immunohistochemical staining of paraffin-embedded Human thyroid tissue within the normal limits using anti-CTSL mouse monoclonal antibody. (Heat-induced epitope retrieval by 1mM EDTA in 10mM Tris buffer (pH8.5) at 120°C for 3min, TA812846) (1:500)



Immunohistochemical staining of paraffin-embedded Carcinoma of Human thyroid tissue using anti-CTSL mouse monoclonal antibody. (Heat-induced epitope retrieval by 1mM EDTA in 10mM Tris buffer (pH8.5) at 120°C for 3min, TA812846) (1:500)



Immunohistochemical staining of paraffin-embedded Human lymphoma tissue using anti-CTSL mouse monoclonal antibody. (Heat-induced epitope retrieval by 1mM EDTA in 10mM Tris buffer (pH8.5) at 120°C for 3min, TA812846) (1:500)



Immunohistochemical staining of paraffin-embedded Human spleen tissue within the normal limits using anti-CTSL mouse monoclonal antibody. (Heat-induced epitope retrieval by 1mM EDTA in 10mM Tris buffer (pH8.5) at 120°C for 3min, TA812846) (1:500)