

## Product datasheet for **TA812820**

### WSTF (BAZ1B) Mouse Monoclonal Antibody [Clone ID: OTI3B8]

#### Product data:

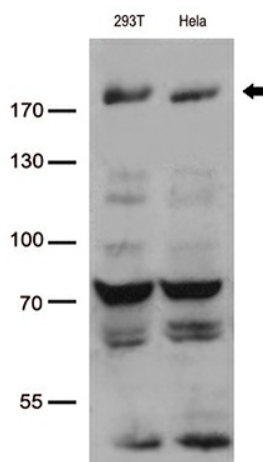
Product Type:	Primary Antibodies
Clone Name:	OTI3B8
Applications:	WB
Recommended Dilution:	WB 1:500
Reactivity:	Human, Mouse, Rat
Host:	Mouse
Isotype:	IgG2b
Clonality:	Monoclonal
Immunogen:	Human recombinant protein fragment corresponding to amino acids 1-260 of human BAZ1B (NP_115784) produced in E.coli.
Formulation:	PBS (pH 7.3) containing 1% BSA, 50% glycerol and 0.02% sodium azide.
Concentration:	1 mg/ml
Purification:	Purified from mouse ascites fluids or tissue culture supernatant by affinity chromatography (protein A/G)
Conjugation:	Unconjugated
Storage:	Store at -20°C as received.
Stability:	Stable for 12 months from date of receipt.
Predicted Protein Size:	170.7 kDa
Gene Name:	bromodomain adjacent to zinc finger domain 1B
Database Link:	<a href="#">NP_115784</a> <a href="#">Entrez Gene 22385 Mouse</a> <a href="#">Entrez Gene 368002 Rat</a> <a href="#">Entrez Gene 9031 Human</a> <a href="#">Q9UIG0</a>
Background:	This gene encodes a member of the bromodomain protein family. The bromodomain is a structural motif characteristic of proteins involved in chromatin-dependent regulation of transcription. This gene is deleted in Williams-Beuren syndrome, a developmental disorder caused by deletion of multiple genes at 7q11.23. [provided by RefSeq, Jul 2008]
Synonyms:	WBSCR9; WBSCR10; WSTF



[View online »](#)

Protein Families: Druggable Genome, Transcription Factors

### Product images:



Western blot analysis of extracts (35ug) from 2 cell lines lysates by using anti-BAZ1B monoclonal antibody (1:500).