

Product datasheet for **TA812808BM**

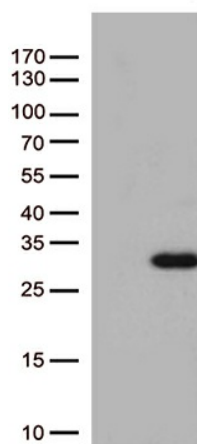
Rab5 (RAB5A) Mouse Monoclonal Antibody (HRP conjugated) [Clone ID: OTI6D9]

Product data:

| | |
|-------------------------|--|
| Product Type: | Primary Antibodies |
| Clone Name: | OTI6D9 |
| Applications: | WB |
| Recommended Dilution: | WB 1:500 |
| Reactivity: | Human, Mouse, Rat |
| Host: | Mouse |
| Isotype: | IgG1 |
| Clonality: | Monoclonal |
| Immunogen: | Full length human recombinant protein of human RAB5A (NP_004153) produced in E.coli. |
| Formulation: | PBS (pH 7.3) containing 1% BSA, 50% glycerol. |
| Concentration: | 0.5 mg/ml |
| Purification: | Purified from mouse ascites fluids or tissue culture supernatant by affinity chromatography (protein A/G) |
| Conjugation: | HRP |
| Storage: | Store at -20°C as received. |
| Stability: | Stable for 12 months from date of receipt. |
| Predicted Protein Size: | 23.5 kDa |
| Gene Name: | RAB5A, member RAS oncogene family |
| Database Link: | NP_004153 Entrez Gene 64633 Rat Entrez Gene 271457 Mouse Entrez Gene 5868 Human P20339 |
| Synonyms: | RAB5 |
| Protein Families: | Druggable Genome |
| Protein Pathways: | Amyotrophic lateral sclerosis (ALS), Endocytosis |



[View online »](#)

Product images:

HEK293T cells were transfected with the pCMV6-ENTRY control (Cat# [PS100001], Left lane) or pCMV6-ENTRY RAB5A (Cat# [RC203873], Right lane) cDNA for 48 hrs and lysed. Equivalent amounts of cell lysates (5 ug per lane) were separated by SDS-PAGE and immunoblotted with anti-RAB5A (Cat# [TA812808])(1:500).