

Product datasheet for **TA812802M**

ATF 4 (ATF4) Mouse Monoclonal Antibody [Clone ID: OTI5F5]

Product data:

Product Type:	Primary Antibodies
Clone Name:	OTI5F5
Applications:	WB
Recommended Dilution:	WB 1:500
Reactivity:	Human, Mouse, Rat
Host:	Mouse
Isotype:	IgG1
Clonality:	Monoclonal
Immunogen:	Full length human recombinant protein of human Atf4 (NP_001666) produced in E.coli.
Formulation:	PBS (pH 7.3) containing 1% BSA, 50% glycerol and 0.02% sodium azide.
Concentration:	1 mg/ml
Purification:	Purified from mouse ascites fluids or tissue culture supernatant by affinity chromatography (protein A/G)
Conjugation:	Unconjugated
Storage:	Shipped at -20°C or with ice packs, Upon delivery store at -20°C. Dilute in PBS(pH7.3) if necessary. Stable for 12 months from date of receipt. Avoid repeated freeze-thaws.
Stability:	Stable for 12 months from date of receipt.
Predicted Protein Size:	38.4 kDa
Gene Name:	activating transcription factor 4
Database Link:	NP_001666 Entrez Gene 11911 Mouse Entrez Gene 79255 Rat Entrez Gene 468 Human P18848



[View online »](#)

Background:

This gene encodes a transcription factor that was originally identified as a widely expressed mammalian DNA binding protein that could bind a tax-responsive enhancer element in the LTR of HTLV-1. The encoded protein was also isolated and characterized as the cAMP-response element binding protein 2 (CREB-2). The protein encoded by this gene belongs to a family of DNA-binding proteins that includes the AP-1 family of transcription factors, cAMP-response element binding proteins (CREBs) and CREB-like proteins. These transcription factors share a leucine zipper region that is involved in protein-protein interactions, located C-terminal to a stretch of basic amino acids that functions as a DNA binding domain. Two alternative transcripts encoding the same protein have been described. Two pseudogenes are located on the X chromosome at q28 in a region containing a large inverted duplication. [provided by RefSeq, Sep 2011].

Synonyms:

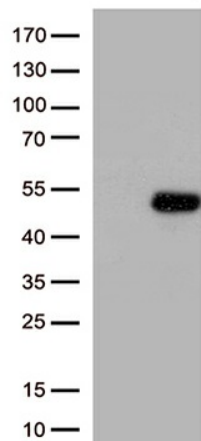
CREB-2; CREB2; TAXREB67; TXREB

Protein Families:

Transcription Factors

Protein Pathways:

GnRH signaling pathway, Long-term potentiation, MAPK signaling pathway, Neurotrophin signaling pathway, Prostate cancer

Product images:


HEK293T cells were transfected with the pCMV6-ENTRY control (Left lane) or pCMV6-ENTRY ATF4 ([RC222709], Right lane) cDNA for 48 hrs and lysed. Equivalent amounts of cell lysates (5 ug per lane) were separated by SDS-PAGE and immunoblotted with anti-ATF4.(1:500)