

Product datasheet for **TA812775AM**

Xanthine Oxidase (XDH) Mouse Monoclonal Antibody (Biotin conjugated) [Clone ID: OT15D8]

Product data:

Product Type:	Primary Antibodies
Clone Name:	OT15D8
Applications:	WB
Recommended Dilution:	WB 1:500
Reactivity:	Human, Mouse, Rat
Host:	Mouse
Isotype:	IgG1
Clonality:	Monoclonal
Immunogen:	Human recombinant protein fragment corresponding to amino acids 1-280 of human XDH (NP_000370) produced in E.coli.
Formulation:	PBS (pH 7.3) containing 1% BSA, 50% glycerol and 0.02% sodium azide.
Concentration:	0.5 mg/ml
Purification:	Purified from mouse ascites fluids or tissue culture supernatant by affinity chromatography (protein A/G)
Conjugation:	Biotin
Storage:	Store at -20°C as received.
Stability:	Stable for 12 months from date of receipt.
Predicted Protein Size:	146.2 kDa
Gene Name:	xanthine dehydrogenase
Database Link:	NP_000370 Entrez Gene 22436 Mouse Entrez Gene 497811 Rat Entrez Gene 7498 Human P47989



[View online »](#)

Background:

Xanthine dehydrogenase belongs to the group of molybdenum-containing hydroxylases involved in the oxidative metabolism of purines. The encoded protein has been identified as a moonlighting protein based on its ability to perform mechanistically distinct functions. Xanthine dehydrogenase can be converted to xanthine oxidase by reversible sulfhydryl oxidation or by irreversible proteolytic modification. Defects in xanthine dehydrogenase cause xanthinuria, may contribute to adult respiratory stress syndrome, and may potentiate influenza infection through an oxygen metabolite-dependent mechanism. [provided by RefSeq, Jan 2014]

Synonyms:

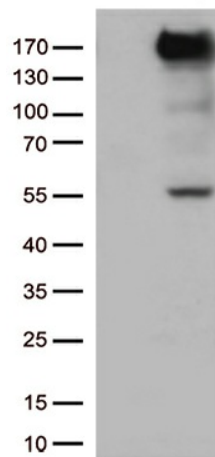
XAN1; XO; XOR

Protein Families:

Druggable Genome

Protein Pathways:

Caffeine metabolism, Drug metabolism - other enzymes, Metabolic pathways, Purine metabolism

Product images:

HEK293T cells were transfected with the pCMV6-ENTRY control (Left lane) or pCMV6-ENTRY XDH ([RC219402], Right lane) cDNA for 48 hrs and lysed. Equivalent amounts of cell lysates (5 ug per lane) were separated by SDS-PAGE and immunoblotted with anti-XDH (1:500). Positive lysates [LY400135] (100ug) and [LC400135] (20ug) can be purchased separately from OriGene.