

Product datasheet for TA812775

Xanthine Oxidase (XDH) Mouse Monoclonal Antibody [Clone ID: OTI5D8]

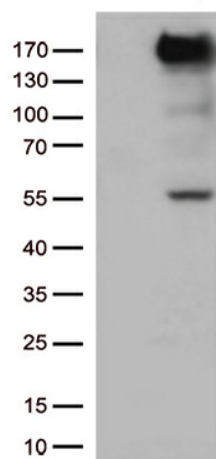
Product data:

Product Type:	Primary Antibodies
Clone Name:	OTI5D8
Applications:	WB
Recommend Dilution:	WB 1:500
Reactivity:	Human
Host:	Mouse
Isotype:	IgG1
Clonality:	Monoclonal
Immunogen:	Human recombinant protein fragment corresponding to amino acids 1-280 of human XDH (NP_000370) produced in E.coli.
Formulation:	PBS (PH 7.3) containing 1% BSA, 50% glycerol and 0.02% sodium azide.
Concentration:	1 mg/ml
Purification:	Purified from cell culture supernatant by affinity chromatography
Predicted Protein Size:	146.2 kDa
Gene Name:	xanthine dehydrogenase
Database Link:	NP_000370 Entrez Gene 7498 Human
Background:	Xanthine dehydrogenase belongs to the group of molybdenum-containing hydroxylases involved in the oxidative metabolism of purines. The encoded protein has been identified as a moonlighting protein based on its ability to perform mechanistically distinct functions. Xanthine dehydrogenase can be converted to xanthine oxidase by reversible sulfhydryl oxidation or by irreversible proteolytic modification. Defects in xanthine dehydrogenase cause xanthinuria, may contribute to adult respiratory stress syndrome, and may potentiate influenza infection through an oxygen metabolite-dependent mechanism. [provided by RefSeq, Jan 2014]
Synonyms:	XAN1; XO; XOR
Protein Families:	Druggable Genome
Protein Pathways:	Caffeine metabolism, Drug metabolism - other enzymes, Metabolic pathways, Purine metabolism



[View online »](#)

Product images:



HEK293T cells were transfected with the pCMV6-ENTRY control (Left lane) or pCMV6-ENTRY XDH (RC219402, Right lane) cDNA for 48 hrs and lysed. Equivalent amounts of cell lysates (5 ug per lane) were separated by SDS-PAGE and immunoblotted with anti-XDH (1:500). Positive lysates LY400135 (100ug) and LC400135 (20ug) can be purchased separately from OriGene.