

## Product datasheet for **TA812774S**

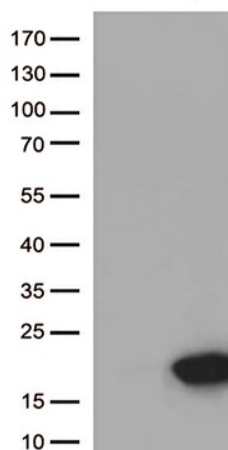
### ARMS2 Mouse Monoclonal Antibody [Clone ID: OTI2G1]

#### Product data:

Product Type:	Primary Antibodies
Clone Name:	OTI2G1
Applications:	WB
Recommended Dilution:	WB 1:500
Reactivity:	Human
Host:	Mouse
Isotype:	IgG1
Clonality:	Monoclonal
Immunogen:	Full length human recombinant protein of human ARMS2 (NP_001093137) produced in E.coli.
Formulation:	PBS (pH 7.3) containing 1% BSA, 50% glycerol and 0.02% sodium azide.
Concentration:	1 mg/ml
Purification:	Purified from mouse ascites fluids or tissue culture supernatant by affinity chromatography (protein A/G)
Conjugation:	Unconjugated
Storage:	Store at -20°C as received.
Stability:	Stable for 12 months from date of receipt.
Predicted Protein Size:	11.3 kDa
Gene Name:	age-related maculopathy susceptibility 2
Database Link:	<a href="#">NP_001093137</a> <a href="#">Entrez Gene 387715 Human</a> <a href="#">P0C7Q2</a>
Background:	This gene encodes a protein that is thought to play a role in diseases in the elderly. Mutations in this gene have been associated with age-related macular degeneration. [provided by RefSeq, Oct 2008]
Synonyms:	ARMD8



[View online »](#)

**Product images:**

HEK293T cells were transfected with the pCMV6-ENTRY control (Cat# [PS100001], Left lane) or pCMV6-ENTRY ARMS2 (Cat# [RC223747], Right lane) cDNA for 48 hrs and lysed. Equivalent amounts of cell lysates (5 ug per lane) were separated by SDS-PAGE and immunoblotted with anti-ARMS2 (Cat# [TA812774])(1:500).