

Product datasheet for **TA812774BM**

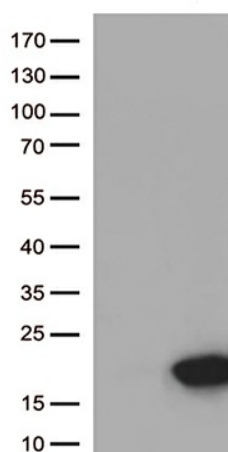
ARMS2 Mouse Monoclonal Antibody (HRP conjugated) [Clone ID: OTI2G1]

Product data:

| | |
|-------------------------|--|
| Product Type: | Primary Antibodies |
| Clone Name: | OTI2G1 |
| Applications: | WB |
| Recommended Dilution: | WB 1:500 |
| Reactivity: | Human |
| Host: | Mouse |
| Isotype: | IgG1 |
| Clonality: | Monoclonal |
| Immunogen: | Full length human recombinant protein of human ARMS2 (NP_001093137) produced in E.coli. |
| Formulation: | PBS (pH 7.3) containing 1% BSA, 50% glycerol. |
| Concentration: | 0.5 mg/ml |
| Purification: | Purified from mouse ascites fluids or tissue culture supernatant by affinity chromatography (protein A/G) |
| Conjugation: | HRP |
| Storage: | Store at -20°C as received. |
| Stability: | Stable for 12 months from date of receipt. |
| Predicted Protein Size: | 11.3 kDa |
| Gene Name: | age-related maculopathy susceptibility 2 |
| Database Link: | NP_001093137 Entrez Gene 387715 Human P0C7Q2 |
| Background: | This gene encodes a protein that is thought to play a role in diseases in the elderly. Mutations in this gene have been associated with age-related macular degeneration. [provided by RefSeq, Oct 2008] |
| Synonyms: | ARMD8 |



[View online »](#)

Product images:

HEK293T cells were transfected with the pCMV6-ENTRY control (Cat# [PS100001], Left lane) or pCMV6-ENTRY ARMS2 (Cat# [RC223747], Right lane) cDNA for 48 hrs and lysed. Equivalent amounts of cell lysates (5 ug per lane) were separated by SDS-PAGE and immunoblotted with anti-ARMS2 (Cat# [TA812774])(1:500).