

## Product datasheet for **TA812766S**

### **TAGLN2 Mouse Monoclonal Antibody [Clone ID: OTI7A5]**

#### **Product data:**

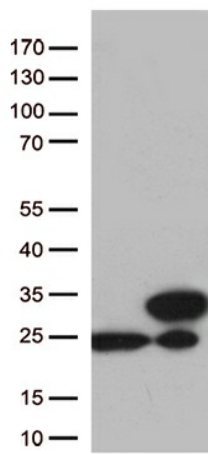
|                                |   |
|--------------------------------|---|
| <b>Product Type:</b>           | Primary Antibodies  |
| <b>Clone Name:</b>             | OTI7A5  |
| <b>Applications:</b>           | WB  |
| <b>Recommended Dilution:</b>   | WB 1:500  |
| <b>Reactivity:</b>             | Human, Mouse, Rat   |
| <b>Host:</b>                   | Mouse   |
| <b>Isotype:</b>                | IgG1  |
| <b>Clonality:</b>              | Monoclonal  |
| <b>Immunogen:</b>              | Full length human recombinant protein of human TAGLN2 (NP_003555) produced in HEK293T cell.   |
| <b>Formulation:</b>            | PBS (pH 7.3) containing 1% BSA, 50% glycerol and 0.02% sodium azide.  |
| <b>Concentration:</b>          | 1 mg/ml   |
| <b>Purification:</b>           | Purified from mouse ascites fluids or tissue culture supernatant by affinity chromatography (protein A/G)   |
| <b>Conjugation:</b>            | Unconjugated  |
| <b>Storage:</b>                | Store at -20°C as received.   |
| <b>Stability:</b>              | Stable for 12 months from date of receipt.  |
| <b>Predicted Protein Size:</b> | 22.2 kDa  |
| <b>Gene Name:</b>              | transgelin 2  |
| <b>Database Link:</b>          | <a href="#">NP_003555</a><br><a href="#">Entrez Gene 21346 Mouse</a> <a href="#">Entrez Gene 304983 Rat</a> <a href="#">Entrez Gene 8407 Human</a><br><a href="#">P37802</a>  |
| <b>Background:</b>             | The protein encoded by this gene is similar to the protein transgelin, which is one of the earliest markers of differentiated smooth muscle. The specific function of this protein has not yet been determined, although it is thought to be a tumor suppressor. Multiple transcript variants encoding different isoforms have been found for this gene. [provided by RefSeq, Mar 2013] |



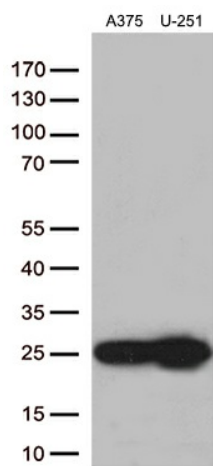
[View online »](#)

Synonyms: HA1756

**Product images:**



HEK293T cells were transfected with the pCMV6-ENTRY control (Cat# [PS100001], Left lane) or pCMV6-ENTRY TAGLN2 (Cat# [RC203473], Right lane) cDNA for 48 hrs and lysed. Equivalent amounts of cell lysates (5 ug per lane) were separated by SDS-PAGE and immunoblotted with anti-TAGLN2 (Cat# [TA812766])(1:500). Positive lysates [LY418584] (100ug) and [LC418584] (20ug) can be purchased separately from OriGene.



Western blot analysis of extracts (35ug) from 2 different cell lines by using anti-TAGLN2 monoclonal antibody (1:500).