

## Product datasheet for **TA812763AM**

### ARHGEF4 Mouse Monoclonal Antibody (Biotin conjugated) [Clone ID: OTI1E5]

#### Product data:

Product Type:	Primary Antibodies
Clone Name:	OTI1E5
Applications:	WB
Recommended Dilution:	WB 1:500
Reactivity:	Human, Mouse, Rat
Host:	Mouse
Isotype:	IgG1
Clonality:	Monoclonal
Immunogen:	Human recombinant protein fragment corresponding to amino acids 1-363 of human ARHGEF4 (NP_056135) produced in E.coli.
Formulation:	PBS (pH 7.3) containing 1% BSA, 50% glycerol and 0.02% sodium azide.
Concentration:	0.5 mg/ml
Purification:	Purified from mouse ascites fluids or tissue culture supernatant by affinity chromatography (protein A/G)
Conjugation:	Biotin
Storage:	Shipped at -20°C or with ice packs, Upon delivery store at -20°C. Dilute in PBS(pH7.3) if necessary. Stable for 12 months from date of receipt. Avoid repeated freeze-thaws.
Stability:	Stable for 12 months from date of receipt.
Predicted Protein Size:	78.9 kDa
Gene Name:	Rho guanine nucleotide exchange factor 4
Database Link:	<a href="#">NP_056135</a> <a href="#">Entrez Gene 50649 Human</a> <a href="#">Q9NR80</a>
Background:	Rho GTPases play a fundamental role in numerous cellular processes that are initiated by extracellular stimuli that work through G protein coupled receptors. The protein encoded by this gene may form complex with G proteins and stimulate Rho-dependent signals. Multiple alternatively spliced transcript variants encoding different isoforms have been found, but the full-length nature of some variants has not been determined. [provided by RefSeq, Jun 2013].



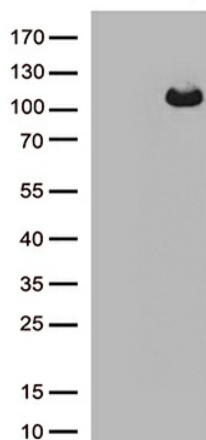
[View online »](#)

**Synonyms:** ASEF; ASEF1; GEF4; SMIM39; STM6

**Protein Families:** Druggable Genome

**Protein Pathways:** Regulation of actin cytoskeleton

### Product images:



HEK293T cells were transfected with the pCMV6-ENTRY control (Left lane) or pCMV6-ENTRY ARHGEF4 ([RC215591], Right lane) cDNA for 48 hrs and lysed. Equivalent amounts of cell lysates (5 ug per lane) were separated by SDS-PAGE and immunoblotted with anti-ARHGEF4.(1:500)