

Product datasheet for **TA812750M**

EFHD1 Mouse Monoclonal Antibody [Clone ID: OT11C12]

Product data:

Product Type:	Primary Antibodies
Clone Name:	OT11C12
Applications:	WB
Recommended Dilution:	WB 1:250
Reactivity:	Human
Host:	Mouse
Isotype:	IgG1
Clonality:	Monoclonal
Immunogen:	Full length human recombinant protein of human EFHD1 (NP_079478) produced in HEK293T cell.
Formulation:	PBS (pH 7.3) containing 1% BSA, 50% glycerol and 0.02% sodium azide.
Concentration:	1 mg/ml
Purification:	Purified from mouse ascites fluids or tissue culture supernatant by affinity chromatography (protein A/G)
Conjugation:	Unconjugated
Storage:	Store at -20°C as received.
Stability:	Stable for 12 months from date of receipt.
Predicted Protein Size:	26.7 kDa
Gene Name:	EF-hand domain family member D1
Database Link:	NP_079478 Entrez Gene 80303 Human Q9BUP0



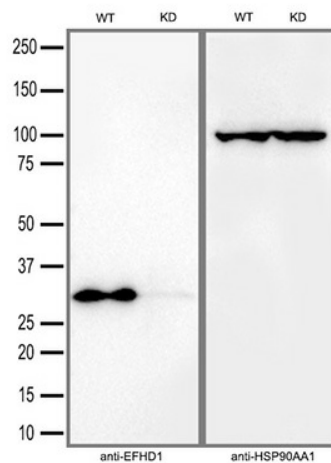
[View online »](#)

Background:

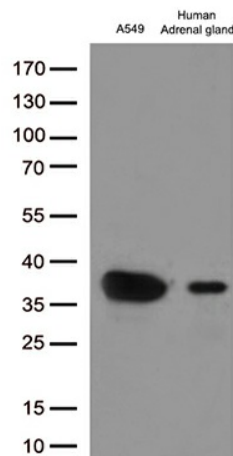
This gene encodes a member of the EF-hand super family of calcium binding proteins, which are involved in a variety of cellular processes including mitosis, synaptic transmission, and cytoskeletal rearrangement. The protein encoded by this gene is composed of an N-terminal disordered region, proline-rich elements, two EF-hands, and a C-terminal coiled-coil domain. This protein has been shown to associate with the mitochondrial inner membrane, and in HeLa cells, acts as a novel mitochondrial calcium ion sensor for mitochondrial flash activation. Alternative splicing results in multiple transcript variants. [provided by RefSeq, Jul 2016]

Synonyms:

MST133; MSTP133; PP3051; SWS2

Product images:


Equivalent amounts of cell lysates (30 ug per lane) of wild-type HeLa cells (WT) and EFHD1-Knockdown HeLa cells (KD) were separated by SDS-PAGE and immunoblotted with anti-EFHD1 monoclonal antibody [TA812750] (1:500). Then the blotted membrane was stripped and reprobed with anti-HSP90AA1 antibody as a loading control.



Western blot analysis of extracts (35ug) from 1 cell line and 1 tissue lysates by using anti-EFHD1 monoclonal antibody (1:250).