

Product datasheet for **TA812749AM**

MX1 Mouse Monoclonal Antibody (Biotin conjugated) [Clone ID: OTI2E7]

Product data:

Product Type:	Primary Antibodies
Clone Name:	OTI2E7
Applications:	WB
Recommended Dilution:	WB 1:500
Reactivity:	Human
Host:	Mouse
Isotype:	IgG1
Clonality:	Monoclonal
Immunogen:	Full length human recombinant protein of human MX1 (NP_002453) produced in HEK293T cell.
Formulation:	PBS (pH 7.3) containing 1% BSA, 50% glycerol and 0.02% sodium azide.
Concentration:	0.5 mg/ml
Purification:	Purified from mouse ascites fluids or tissue culture supernatant by affinity chromatography (protein A/G)
Conjugation:	Biotin
Storage:	Store at -20°C as received.
Stability:	Stable for 12 months from date of receipt.
Predicted Protein Size:	75.3 kDa
Gene Name:	MX dynamin like GTPase 1
Database Link:	NP_002453 Entrez Gene 4599 Human P20591
Background:	This gene encodes a guanosine triphosphate (GTP)-metabolizing protein that participates in the cellular antiviral response. The encoded protein is induced by type I and type II interferons and antagonizes the replication process of several different RNA and DNA viruses. There is a related gene located adjacent to this gene on chromosome 21, and there are multiple pseudogenes located in a cluster on chromosome 4. Alternative splicing results in multiple transcript variants. [provided by RefSeq, Sep 2013]

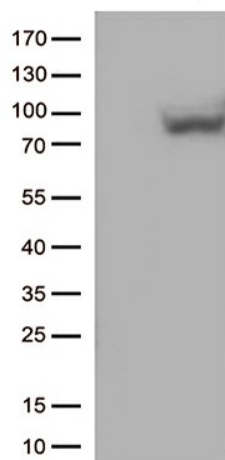


[View online »](#)

Synonyms: IFI-78K; IFI78; IncMX1-215; MX; MxA

Protein Families: Druggable Genome

Product images:



HEK293T cells were transfected with the pCMV6-ENTRY control (Left lane) or pCMV6-ENTRY MX1 ([RC207418], Right lane) cDNA for 48 hrs and lysed. Equivalent amounts of cell lysates (5 ug per lane) were separated by SDS-PAGE and immunoblotted with anti-MX1 (1:500). Positive lysates [LY400886] (100ug) and [LC400886] (20ug) can be purchased separately from OriGene.