

## Product datasheet for TA812742M

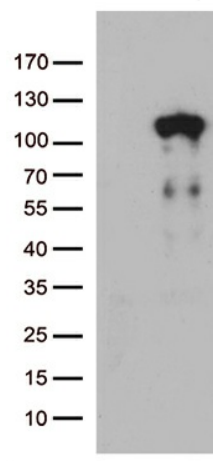
### Lebercilin (LCA5) Mouse Monoclonal Antibody [Clone ID: OTI2D3]

#### Product data:

Product Type:	Primary Antibodies
Clone Name:	OTI2D3
Applications:	WB
Recommended Dilution:	WB 1:500
Reactivity:	Human
Host:	Mouse
Isotype:	IgG1
Clonality:	Monoclonal
Immunogen:	Full length human recombinant protein of human LCA5 (NP_001116241) produced in E.coli.
Formulation:	PBS (pH 7.3) containing 1% BSA, 50% glycerol and 0.02% sodium azide.
Concentration:	1 mg/ml
Purification:	Purified from mouse ascites fluids or tissue culture supernatant by affinity chromatography (protein A/G)
Conjugation:	Unconjugated
Storage:	Store at -20°C as received.
Stability:	Stable for 12 months from date of receipt.
Predicted Protein Size:	80.4 kDa
Gene Name:	LCA5, lebercilin
Database Link:	<a href="#">NP_001116241</a> <a href="#">Entrez Gene 167691 Human</a> <a href="#">Q86VQ0</a>
Background:	Might be involved in minus end-directed microtubule transport. [UniProtKB/Swiss-Prot Function]
Synonyms:	C6orf152


[View online »](#)

## Product images:



HEK293T cells were transfected with the pCMV6-ENTRY control (Cat# [PS100001], Left lane) or pCMV6-ENTRY LCA5 (Cat# [RC226099], Right lane) cDNA for 48 hrs and lysed. Equivalent amounts of cell lysates (5 ug per lane) were separated by SDS-PAGE and immunoblotted with anti-LCA5 (Cat# [TA812742])(1:500). Positive lysates [LY426559] (100ug) and [LC426559] (20ug) can be purchased separately from OriGene.