

## Product datasheet for **TA812738**

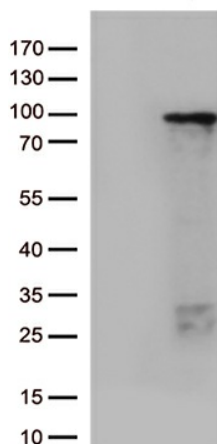
### ZNF226 Mouse Monoclonal Antibody [Clone ID: OTI4E1]

#### Product data:

|                         |   |
|-------------------------|---|
| Product Type:           | Primary Antibodies  |
| Clone Name:             | OTI4E1  |
| Applications:           | WB  |
| Recommended Dilution:   | WB 1:500  |
| Reactivity:             | Human   |
| Host:                   | Mouse   |
| Isotype:                | IgG1  |
| Clonality:              | Monoclonal  |
| Immunogen:              | Full length human recombinant protein of human ZNF226 (NP_001027545) produced in E.coli.                  |
| Formulation:            | PBS (pH 7.3) containing 1% BSA, 50% glycerol and 0.02% sodium azide.                                      |
| Concentration:          | 1 mg/ml   |
| Purification:           | Purified from mouse ascites fluids or tissue culture supernatant by affinity chromatography (protein A/G) |
| Conjugation:            | Unconjugated  |
| Storage:                | Store at -20°C as received.   |
| Stability:              | Stable for 12 months from date of receipt.  |
| Predicted Protein Size: | 91.7 kDa  |
| Gene Name:              | zinc finger protein 226   |
| Database Link:          | <a href="#">NP_001027545</a><br><a href="#">Entrez Gene 7769 Human</a><br><a href="#">Q9NYT6</a>          |
| Background:             | May be involved in transcriptional regulation. [UniProtKB/Swiss-Prot Function]                            |
| Protein Families:       | Transcription Factors   |



[View online »](#)

**Product images:**

HEK293T cells were transfected with the pCMV6-ENTRY control (Cat# [PS100001], Left lane) or pCMV6-ENTRY ZNF226 (Cat# [RC223775], Right lane) cDNA for 48 hrs and lysed. Equivalent amounts of cell lysates (5 ug per lane) were separated by SDS-PAGE and immunoblotted with anti-ZNF226 (Cat# TA812738)(1:500).