

## Product datasheet for **TA812734AM**

### ARSG Mouse Monoclonal Antibody (Biotin conjugated) [Clone ID: OTI2D12]

#### Product data:

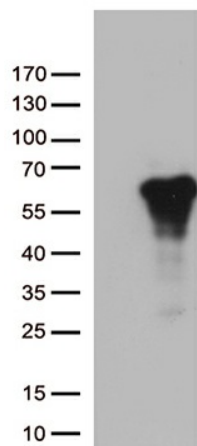
|                         |  |
|-------------------------|--|
| Product Type:           | Primary Antibodies   |
| Clone Name:             | OTI2D12  |
| Applications:           | WB   |
| Recommended Dilution:   | WB 1:500   |
| Reactivity:             | Human  |
| Host:                   | Mouse  |
| Isotype:                | IgG2b  |
| Clonality:              | Monoclonal   |
| Immunogen:              | Human recombinant protein fragment corresponding to amino acids 17-525 of human ARSG (NP_055775) produced in E.coli.   |
| Formulation:            | PBS (pH 7.3) containing 1% BSA, 50% glycerol and 0.02% sodium azide.   |
| Concentration:          | 0.5 mg/ml  |
| Purification:           | Purified from mouse ascites fluids or tissue culture supernatant by affinity chromatography (protein A/G)  |
| Conjugation:            | Biotin   |
| Storage:                | Store at -20°C as received.  |
| Stability:              | Stable for 12 months from date of receipt.   |
| Predicted Protein Size: | 56.9 kDa   |
| Gene Name:              | arylsulfatase G  |
| Database Link:          | <a href="#">NP_055775</a><br><a href="#">Entrez Gene 22901 Human</a><br><a href="#">Q96EG1</a>   |
| Background:             | The protein encoded by this gene belongs to the sulfatase enzyme family. Sulfatases hydrolyze sulfate esters from sulfated steroids, carbohydrates, proteoglycans, and glycolipids. They are involved in hormone biosynthesis, modulation of cell signaling, and degradation of macromolecules. This protein displays arylsulfatase activity at acidic pH, as is typical of lysosomal sulfatases, and has been shown to localize in the lysosomes. Alternatively spliced transcript variants have been found for this gene. [provided by RefSeq, Jun 2012] |



[View online »](#)

Synonyms: USH4  
Protein Families: Druggable Genome  
Protein Pathways: Lysosome

### Product images:



HEK293T cells were transfected with the pCMV6-ENTRY control (Cat# [PS100001], Left lane) or pCMV6-ENTRY ARSG (Cat# [RC201967], Right lane) cDNA for 48 hrs and lysed. Equivalent amounts of cell lysates (5 ug per lane) were separated by SDS-PAGE and immunoblotted with anti-ARSG (Cat# [TA812734])(1:500). Positive lysates [LY402396] (100ug) and [LC402396] (20ug) can be purchased separately from OriGene.