

Product datasheet for **TA812732BM**

ARSG Mouse Monoclonal Antibody (HRP conjugated) [Clone ID: OTI4H3]

Product data:

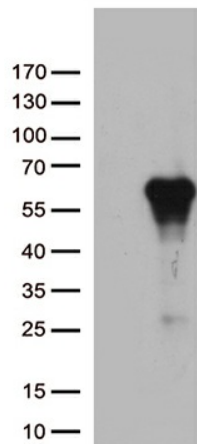
Product Type:	Primary Antibodies
Clone Name:	OTI4H3
Applications:	WB
Recommended Dilution:	WB 1:500
Reactivity:	Human
Host:	Mouse
Isotype:	IgG2a
Clonality:	Monoclonal
Immunogen:	Human recombinant protein fragment corresponding to amino acids 17-525 of human ARSG (NP_055775) produced in E.coli.
Formulation:	PBS (pH 7.3) containing 1% BSA, 50% glycerol.
Concentration:	0.5 mg/ml
Purification:	Purified from mouse ascites fluids or tissue culture supernatant by affinity chromatography (protein A/G)
Conjugation:	HRP
Storage:	Store at -20°C as received.
Stability:	Stable for 12 months from date of receipt.
Predicted Protein Size:	56.9 kDa
Gene Name:	arylsulfatase G
Database Link:	NP_055775 Entrez Gene 22901 Human Q96EG1
Background:	The protein encoded by this gene belongs to the sulfatase enzyme family. Sulfatases hydrolyze sulfate esters from sulfated steroids, carbohydrates, proteoglycans, and glycolipids. They are involved in hormone biosynthesis, modulation of cell signaling, and degradation of macromolecules. This protein displays arylsulfatase activity at acidic pH, as is typical of lysosomal sulfatases, and has been shown to localize in the lysosomes. Alternatively spliced transcript variants have been found for this gene. [provided by RefSeq, Jun 2012]



[View online »](#)

Synonyms: USH4
Protein Families: Druggable Genome
Protein Pathways: Lysosome

Product images:



HEK293T cells were transfected with the pCMV6-ENTRY control (Left lane) or pCMV6-ENTRY ARSG ([RC201967], Right lane) cDNA for 48 hrs and lysed. Equivalent amounts of cell lysates (5 ug per lane) were separated by SDS-PAGE and immunoblotted with anti-ARSG (1:500). Positive lysates [LY402396] (100ug) and [LC402396] (20ug) can be purchased separately from OriGene.