

Product datasheet for **TA812725M**

GTF2H3 Mouse Monoclonal Antibody [Clone ID: OTI6E12]

Product data:

Product Type:	Primary Antibodies
Clone Name:	OTI6E12
Applications:	WB
Recommended Dilution:	WB 1:500
Reactivity:	Human, Mouse, Rat
Host:	Mouse
Isotype:	IgG1
Clonality:	Monoclonal
Immunogen:	Human recombinant protein fragment corresponding to amino acids 1-241 of human GTF2H3 (NP_001507) produced in E.coli.
Formulation:	PBS (pH 7.3) containing 1% BSA, 50% glycerol and 0.02% sodium azide.
Concentration:	1 mg/ml
Purification:	Purified from mouse ascites fluids or tissue culture supernatant by affinity chromatography (protein A/G)
Conjugation:	Unconjugated
Storage:	Store at -20°C as received.
Stability:	Stable for 12 months from date of receipt.
Predicted Protein Size:	34.2 kDa
Gene Name:	general transcription factor IIH subunit 3
Database Link:	NP_001507 Entrez Gene 2967 Human Q13889
Background:	This gene encodes a member of the TFB4 family. The encoded protein is a subunit of the core-TFIID basal transcription factor and localizes to the nucleus. The encoded protein is involved in RNA transcription by RNA polymerase II and nucleotide excision repair and associates with the Cdk-activating kinase complex. Alternative splicing results in multiple transcript variants. A related pseudogene has been identified on chromosome 14. [provided by RefSeq, Dec 2012]

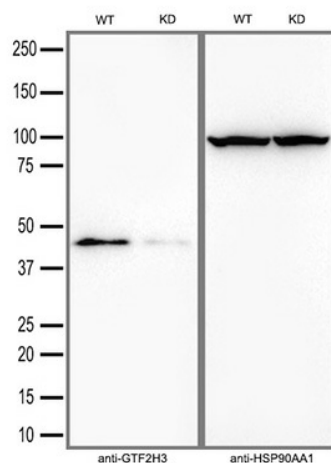
[View online »](#)

Synonyms: BTF2; P34; TFB4; TFIIH

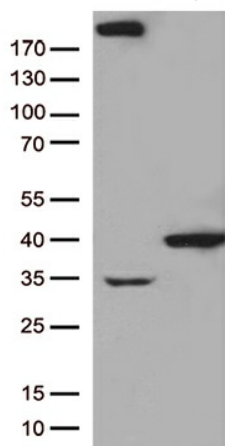
Protein Families: Druggable Genome, Transcription Factors

Protein Pathways: Basal transcription factors, Nucleotide excision repair

Product images:



Equivalent amounts of cell lysates (30 ug per lane) of wild-type HeLa cells (WT) and GTF2H3-Knockdown HeLa cells (KD) were separated by SDS-PAGE and immunoblotted with anti-GTF2H3 monoclonal antibody [TA812725] (1:1000). Then the blotted membrane was stripped and reprobed with anti-HSP90AA1 antibody as a loading control.



HEK293T cells were transfected with the pCMV6-ENTRY control (Cat# [PS100001], Left lane) or pCMV6-ENTRY GTF2H3 (Cat# [RC209399], Right lane) cDNA for 48 hrs and lysed. Equivalent amounts of cell lysates (5 ug per lane) were separated by SDS-PAGE and immunoblotted with anti-GTF2H3 (Cat# [TA812725])(1:500). Positive lysates [LY419886] (100ug) and [LC419886] (20ug) can be purchased separately from OriGene.