

## Product datasheet for **TA812723AM**

### **GTF2H3 Mouse Monoclonal Antibody (Biotin conjugated) [Clone ID: OTI4B5]**

#### **Product data:**

<b>Product Type:</b>	Primary Antibodies
<b>Clone Name:</b>	OTI4B5
<b>Applications:</b>	WB
<b>Recommended Dilution:</b>	WB 1:500
<b>Reactivity:</b>	Human, Mouse, Rat
<b>Host:</b>	Mouse
<b>Isotype:</b>	IgG1
<b>Clonality:</b>	Monoclonal
<b>Immunogen:</b>	Human recombinant protein fragment corresponding to amino acids 1-241 of human GTF2H3 (NP_001507) produced in E.coli.
<b>Formulation:</b>	PBS (pH 7.3) containing 1% BSA, 50% glycerol and 0.02% sodium azide.
<b>Concentration:</b>	0.5 mg/ml
<b>Purification:</b>	Purified from mouse ascites fluids or tissue culture supernatant by affinity chromatography (protein A/G)
<b>Conjugation:</b>	Biotin
<b>Storage:</b>	Store at -20°C as received.
<b>Stability:</b>	Stable for 12 months from date of receipt.
<b>Predicted Protein Size:</b>	34.2 kDa
<b>Gene Name:</b>	general transcription factor IIH subunit 3
<b>Database Link:</b>	<a href="#">NP_001507</a> <a href="#">Entrez Gene 2967 Human</a> <a href="#">Q13889</a>
<b>Background:</b>	This gene encodes a member of the TFB4 family. The encoded protein is a subunit of the core-TFIID basal transcription factor and localizes to the nucleus. The encoded protein is involved in RNA transcription by RNA polymerase II and nucleotide excision repair and associates with the Cdk-activating kinase complex. Alternative splicing results in multiple transcript variants. A related pseudogene has been identified on chromosome 14. [provided by RefSeq, Dec 2012]



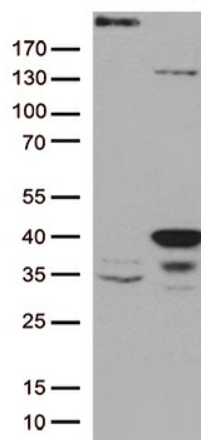
[View online »](#)

**Synonyms:** BTF2; P34; TFB4; TFIIH

**Protein Families:** Druggable Genome, Transcription Factors

**Protein Pathways:** Basal transcription factors, Nucleotide excision repair

### Product images:



HEK293T cells were transfected with the pCMV6-ENTRY control (Left lane) or pCMV6-ENTRY GTF2H3 ([RC209399], Right lane) cDNA for 48 hrs and lysed. Equivalent amounts of cell lysates (5 ug per lane) were separated by SDS-PAGE and immunoblotted with anti-GTF2H3 (1:500). Positive lysates [LY419886] (100ug) and [LC419886] (20ug) can be purchased separately from OriGene.