

Product datasheet for TA812721M

M6PR Mouse Monoclonal Antibody [Clone ID: OTI2F3]

Product data:

| | |
|-------------------------|--|
| Product Type: | Primary Antibodies |
| Clone Name: | OTI2F3 |
| Applications: | WB |
| Recommended Dilution: | WB 1:500 |
| Reactivity: | Human, Dog, Monkey, Mouse, Rat |
| Host: | Mouse |
| Isotype: | IgG1 |
| Clonality: | Monoclonal |
| Immunogen: | Human recombinant protein fragment corresponding to amino acids 27-185 of human M6PR (NP_002346) produced in E.coli. |
| Formulation: | PBS (pH 7.3) containing 1% BSA, 50% glycerol and 0.02% sodium azide. |
| Concentration: | 1 mg/ml |
| Purification: | Purified from mouse ascites fluids or tissue culture supernatant by affinity chromatography (protein A/G) |
| Conjugation: | Unconjugated |
| Storage: | Store at -20°C as received. |
| Stability: | Stable for 12 months from date of receipt. |
| Predicted Protein Size: | 30.99 kDa |
| Gene Name: | mannose-6-phosphate receptor, cation dependent |
| Database Link: | NP_002346 Entrez Gene 17113 Mouse Entrez Gene 312689 Rat Entrez Gene 477700 Dog Entrez Gene 716696 Monkey Entrez Gene 4074 Human P20645 |
| Background: | Transport of phosphorylated lysosomal enzymes from the Golgi complex and the cell surface to lysosomes. Lysosomal enzymes bearing phosphomannosyl residues bind specifically to mannose-6-phosphate receptors in the Golgi apparatus and the resulting receptor-ligand complex is transported to an acidic prelysosomal compartment where the low pH mediates the dissociation of the complex. [UniProtKB/Swiss-Prot Function] |

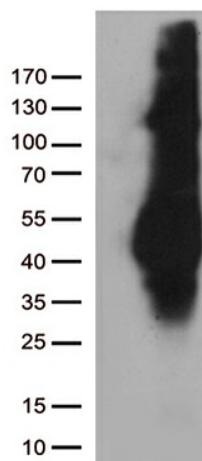

[View online »](#)

Synonyms: CD-M6PR; CD-MPR; MPR-46; MPR 46; MPR46; SMPR

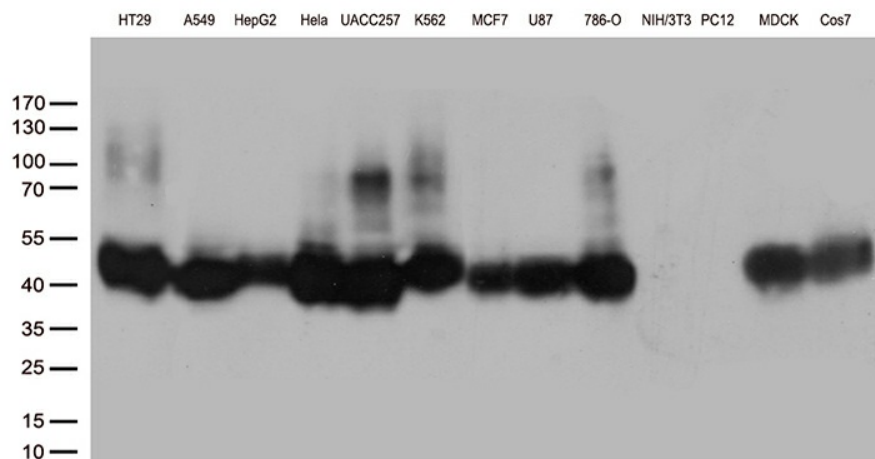
Protein Families: Druggable Genome, Transmembrane

Protein Pathways: Lysosome

Product images:



HEK293T cells were transfected with the pCMV6-ENTRY control (Cat# [PS100001], Left lane) or pCMV6-ENTRY M6PR (Cat# [RC201277], Right lane) cDNA for 48 hrs and lysed. Equivalent amounts of cell lysates (5 ug per lane) were separated by SDS-PAGE and immunoblotted with anti-M6PR (Cat# [TA812721])(1:500). Positive lysates [LY419372] (100ug) and [LC419372] (20ug) can be purchased separately from OriGene.



Western blot analysis of extracts (35ug) from 13 different cell lines by using anti-M6PR monoclonal antibody (1:500).