

## Product datasheet for TA812721AM

### M6PR Mouse Monoclonal Antibody (Biotin conjugated) [Clone ID: OT12F3]

#### Product data:

Product Type:	Primary Antibodies
Clone Name:	OT12F3
Applications:	WB
Recommended Dilution:	WB 1:500
Reactivity:	Human, Dog, Monkey, Mouse, Rat
Host:	Mouse
Isotype:	IgG1
Clonality:	Monoclonal
Immunogen:	Human recombinant protein fragment corresponding to amino acids 27-185 of human M6PR (NP_002346) produced in E.coli.
Formulation:	PBS (pH 7.3) containing 1% BSA, 50% glycerol and 0.02% sodium azide.
Concentration:	0.5 mg/ml
Purification:	Purified from mouse ascites fluids or tissue culture supernatant by affinity chromatography (protein A/G)
Conjugation:	Biotin
Storage:	Store at -20°C as received.
Stability:	Stable for 12 months from date of receipt.
Predicted Protein Size:	30.99 kDa
Gene Name:	mannose-6-phosphate receptor, cation dependent
Database Link:	<a href="#">NP_002346</a> <a href="#">Entrez Gene 17113 Mouse</a> <a href="#">Entrez Gene 312689 Rat</a> <a href="#">Entrez Gene 477700 Dog</a> <a href="#">Entrez Gene 716696 Monkey</a> <a href="#">Entrez Gene 4074 Human</a> <a href="#">P20645</a>
Background:	Transport of phosphorylated lysosomal enzymes from the Golgi complex and the cell surface to lysosomes. Lysosomal enzymes bearing phosphomannosyl residues bind specifically to mannose-6-phosphate receptors in the Golgi apparatus and the resulting receptor-ligand complex is transported to an acidic prelysosomal compartment where the low pH mediates the dissociation of the complex. [UniProtKB/Swiss-Prot Function]

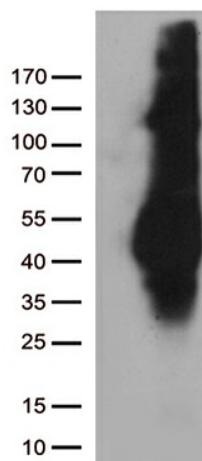

[View online »](#)

**Synonyms:** CD-M6PR; CD-MPR; MPR-46; MPR 46; MPR46; SMPR

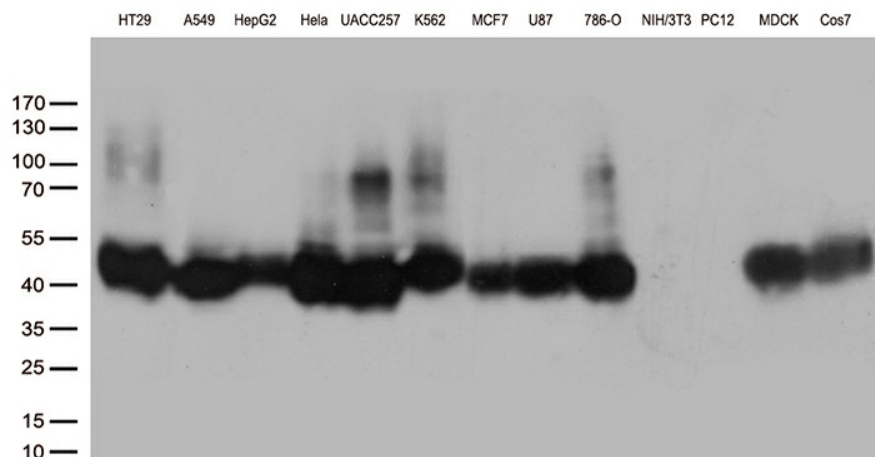
**Protein Families:** Druggable Genome, Transmembrane

**Protein Pathways:** Lysosome

### Product images:



HEK293T cells were transfected with the pCMV6-ENTRY control (Cat# [PS100001], Left lane) or pCMV6-ENTRY M6PR (Cat# [RC201277], Right lane) cDNA for 48 hrs and lysed. Equivalent amounts of cell lysates (5 ug per lane) were separated by SDS-PAGE and immunoblotted with anti-M6PR (Cat# [TA812721])(1:500). Positive lysates [LY419372] (100ug) and [LC419372] (20ug) can be purchased separately from OriGene.



Western blot analysis of extracts (35ug) from 13 different cell lines by using anti-M6PR monoclonal antibody (1:500).