

## Product datasheet for **TA812721**

### **M6PR Mouse Monoclonal Antibody [Clone ID: OTI2F3]**

#### **Product data:**

<b>Product Type:</b>	Primary Antibodies
<b>Clone Name:</b>	OTI2F3
<b>Applications:</b>	WB
<b>Recommended Dilution:</b>	WB 1:500
<b>Reactivity:</b>	Human, Dog, Monkey, Mouse, Rat
<b>Host:</b>	Mouse
<b>Isotype:</b>	IgG1
<b>Clonality:</b>	Monoclonal
<b>Immunogen:</b>	Human recombinant protein fragment corresponding to amino acids 27-185 of human M6PR (NP_002346) produced in E.coli.
<b>Formulation:</b>	PBS (pH 7.3) containing 1% BSA, 50% glycerol and 0.02% sodium azide.
<b>Concentration:</b>	1 mg/ml
<b>Purification:</b>	Purified from mouse ascites fluids or tissue culture supernatant by affinity chromatography (protein A/G)
<b>Conjugation:</b>	Unconjugated
<b>Storage:</b>	Store at -20°C as received.
<b>Stability:</b>	Stable for 12 months from date of receipt.
<b>Predicted Protein Size:</b>	30.99 kDa
<b>Gene Name:</b>	mannose-6-phosphate receptor, cation dependent
<b>Database Link:</b>	<a href="#">NP_002346</a> <a href="#">Entrez Gene 17113 Mouse</a> <a href="#">Entrez Gene 312689 Rat</a> <a href="#">Entrez Gene 477700 Dog</a> <a href="#">Entrez Gene 716696 Monkey</a> <a href="#">Entrez Gene 4074 Human</a> <a href="#">P20645</a>
<b>Background:</b>	Transport of phosphorylated lysosomal enzymes from the Golgi complex and the cell surface to lysosomes. Lysosomal enzymes bearing phosphomannosyl residues bind specifically to mannose-6-phosphate receptors in the Golgi apparatus and the resulting receptor-ligand complex is transported to an acidic prelysosomal compartment where the low pH mediates the dissociation of the complex. [UniProtKB/Swiss-Prot Function]



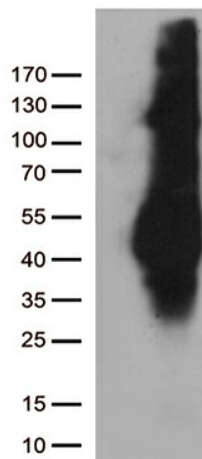
[View online »](#)

**Synonyms:** CD-M6PR; CD-MPR; MPR-46; MPR 46; MPR46; SMPR

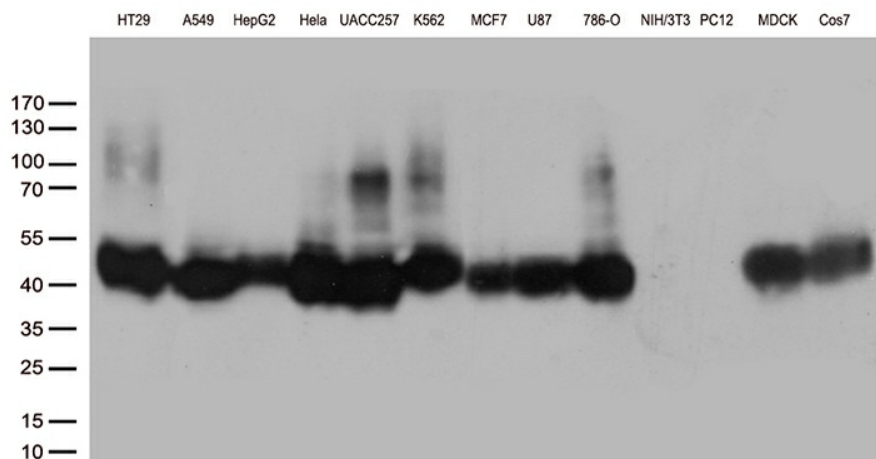
**Protein Families:** Druggable Genome, Transmembrane

**Protein Pathways:** Lysosome

**Product images:**



HEK293T cells were transfected with the pCMV6-ENTRY control (Cat# [PS100001], Left lane) or pCMV6-ENTRY M6PR (Cat# [RC201277], Right lane) cDNA for 48 hrs and lysed. Equivalent amounts of cell lysates (5 ug per lane) were separated by SDS-PAGE and immunoblotted with anti-M6PR (Cat# TA812721)(1:500). Positive lysates [LY419372] (100ug) and [LC419372] (20ug) can be purchased separately from OriGene.



Western blot analysis of extracts (35ug) from 13 different cell lines by using anti-M6PR monoclonal antibody (1:500).